





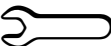
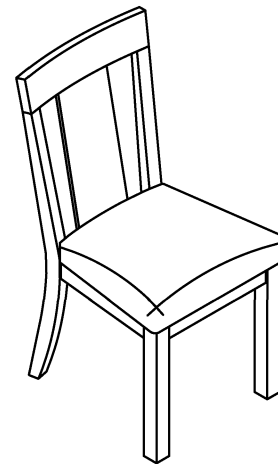


BOB'S DISCOUNT FURNITURE ASSEMBLY INSTRUCTIONS

PLANK BACK DINING CHAIR

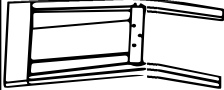


HARDWARE LIST/ LISTE DE QUINCAILLERIE

| | | | |
|---|---|---|---------------------|
| 1 | Short Bolt $\phi 1/4"$ x38 mm |  | 3 pcs 3 pièces |
| | Boulon $\phi 1/4"$ x38 mm | | |
| 2 | Long Bolt $\phi 1/4"$ x85 mm |  | 4 pcs 4 pièces |
| | Boulon $\phi 1/4"$ x85 mm | | |
| 3 | Hex-Nut $\phi 5/16"$ |  | 4 pcs 4 pièces |
| | Ecrou hexagonal $\phi 5/16"$ | | |
| 4 | Spring Washer $\phi 5/16"$ x12 mm |  | 11 pcs 11 pièces |
| | Rondelle de ressort $\phi 5/16"$ x12 mm | | |
| 5 | Flat Washer $\phi 5/16"$ x19 mm |  | 11 pcs 11 pièces |
| | Rondelle plate $\phi 5/16"$ x19 mm | | |
| 6 | Allen Key 58 x 23 x 4 mm |  | 1 pc 1 pièce |
| | Clé Allen 58 x 23 x 4 mm | | |
| 7 | Wrench 12 x 75 mm |  | 1 pc 1 pièce |
| | Clé 12 x 75 mm | | |

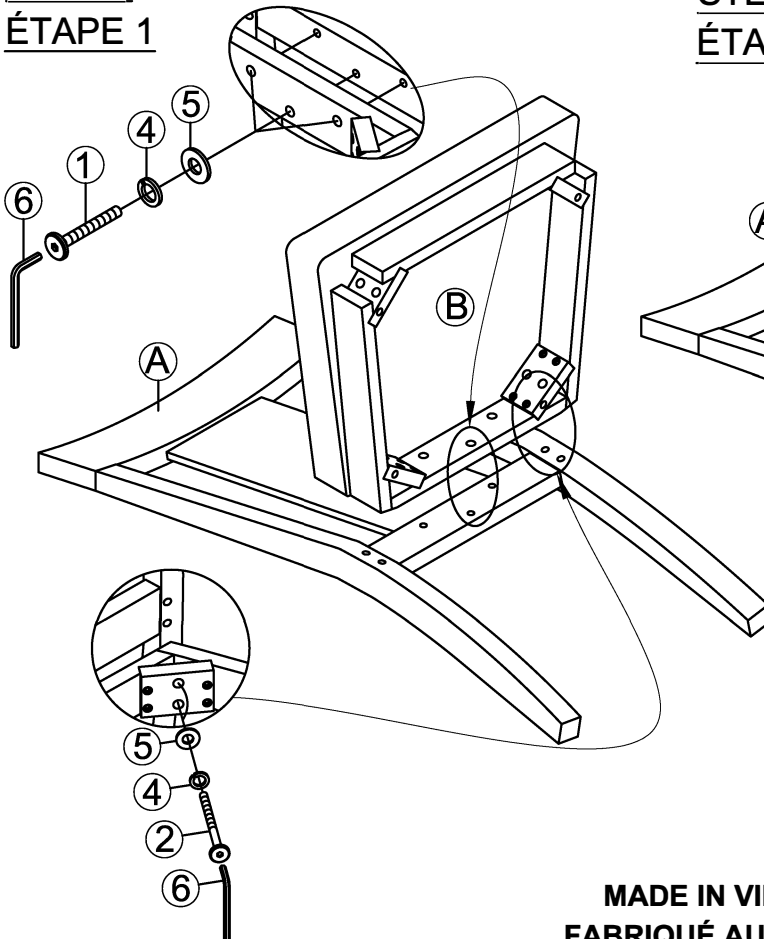


ASSEMBLY COMPLETED

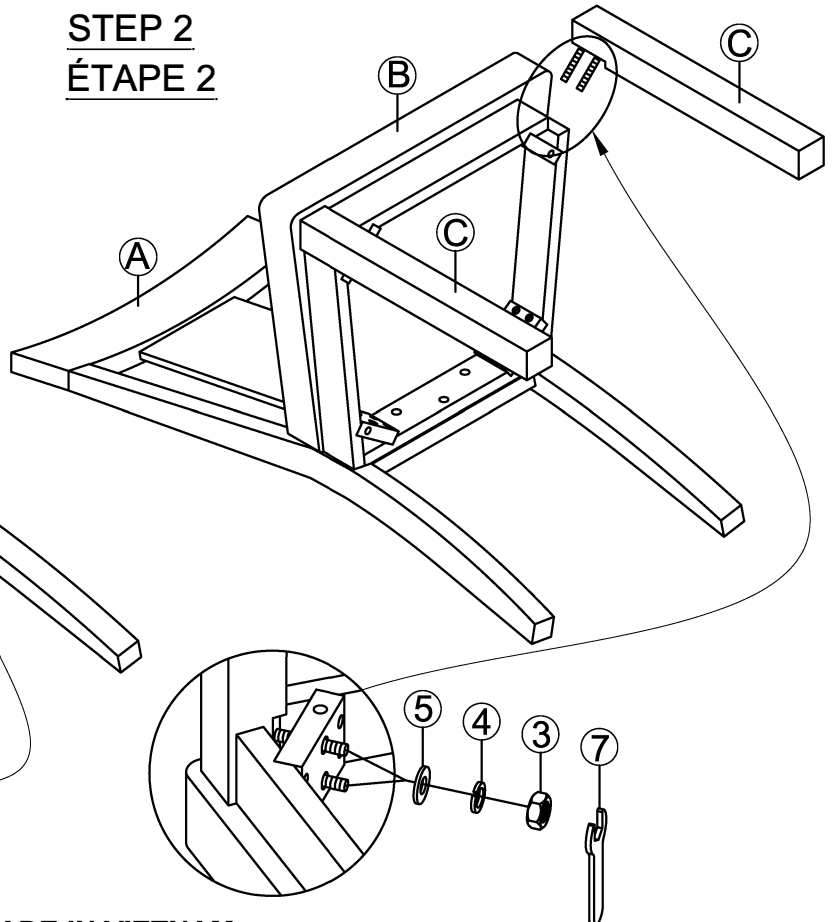
PART LIST/LISTE DE PIÈCES

| | | | QTY'/ QTÉ |
|---|-------------------|---|-------------------|
| A | CHAIR BACK |  | 1 PC 1 PIÈCE |
| | DOSSIER DE CHAISE | | |
| B | SEAT |  | 1 PC 1 PIÈCE |
| | SIEGE | | |
| C | FRONT LEG |  | 2 PCS 2 PIÈCES |
| | PIEDS AVANT | | |

STEP 1 ÉTAPE 1



STEP 2 ÉTAPE 2



MADE IN VIETNAM
FABRIQUÉ AU VIETNAM



WARNING: To avoid serious personal injury:

- Carefully and strictly follow assembly instructions. Improper assembly of furniture can result in structural failure, instability of the product, or tip-over.
- Monitor and carefully control the assembly components. These include small parts and hardware that may present a choking hazard to small children. Bob's furniture should be assembled only by responsible adults and children should not be involved in the assembly process.
- Where provided, wall mounting hardware should always be used as prescribed in these instructions to anchor furniture to walls. Proper use of the wall mounting hardware can significantly reduce the potential for furniture tip-over and crushing injuries.