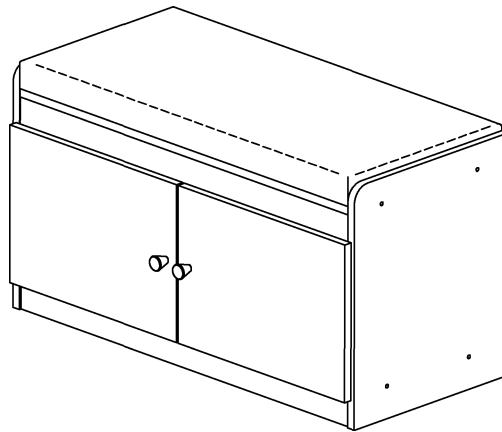


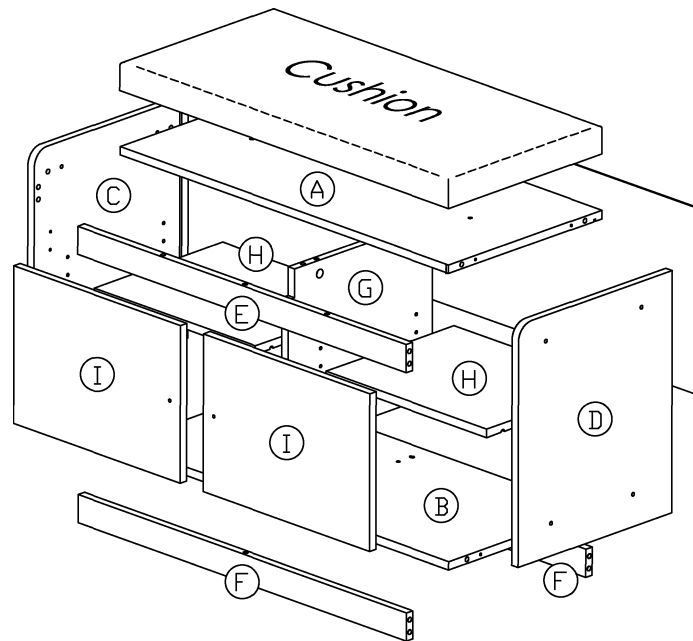
 **WARNING: To avoid serious personal injury:**

- Carefully and strictly follow assembly instructions. Improper assembly of furniture can result in structural failure, instability of the product, or tip-over.
- Monitor and carefully control the assembly components. These include small parts and hardware that may present a choking hazard to small children. Bob's furniture should be assembled only by responsible adults and children should not be involved in the assembly process.
- Where provided, wall mounting hardware should always be used as prescribed in these instructions to anchor furniture to wall. Proper use of the wall mounting hardware can significantly reduce the potential for furniture tip-over and crushing injuries.

Assembly Instruction



Part List



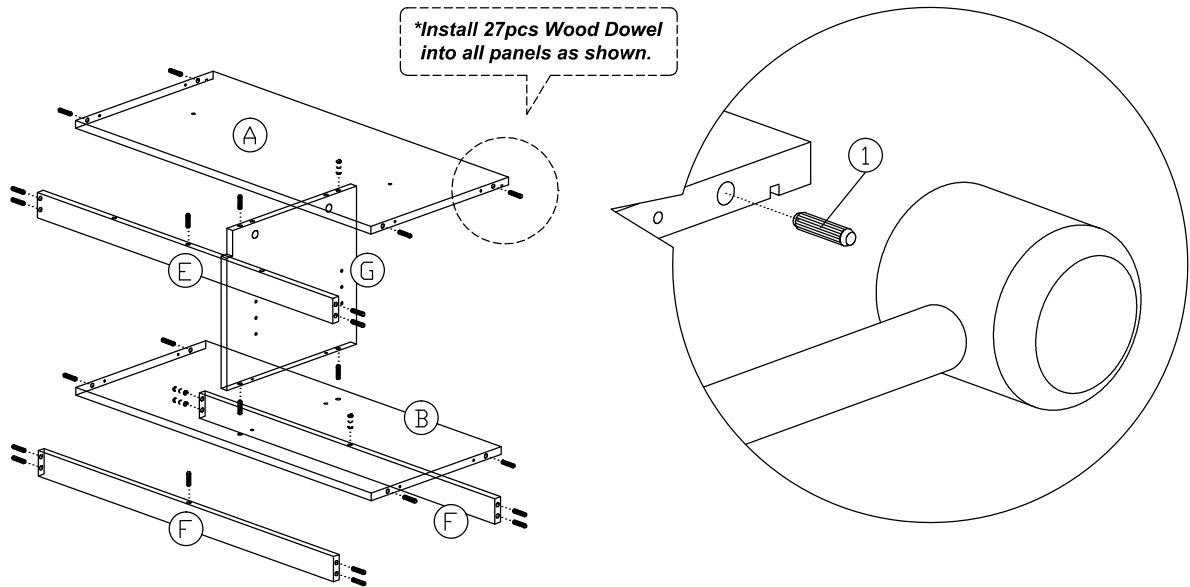
Hardware List

No.	SHAPE	DESCRIPTION	Qty.
1		8x25mm Wood Dowel	27Pcs
2		15MM Titus Mini Fix	4Sets
3		M3.5x16mm Screw	8Pcs
4		TP 10#x1/2" Screw	16Pcs
5		M4x25mm Screw	2Pcs
6		M5x38mm Screw	10Pcs
7		Shelf Support	8Pcs

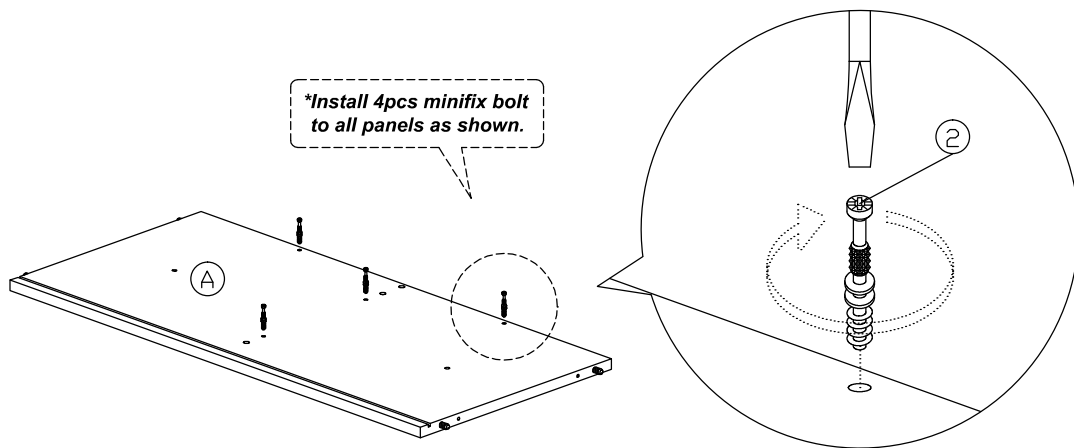
8		Nail	9Pcs
9		Screw Cap	8Pcs
10		Nail Leg	6Pcs
11		Hinges (F012)	4Sets
12		Handle Knob 311	2 Sets
13		L Bracket	4Pcs

Assembly Instruction

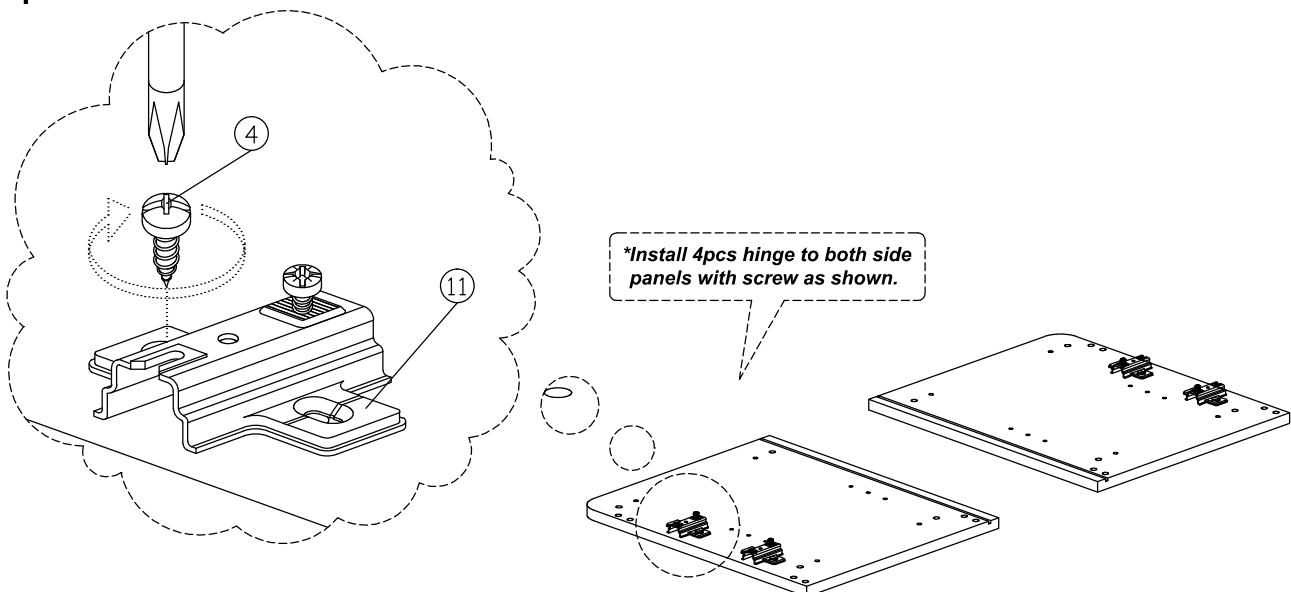
Step 1



Step 2

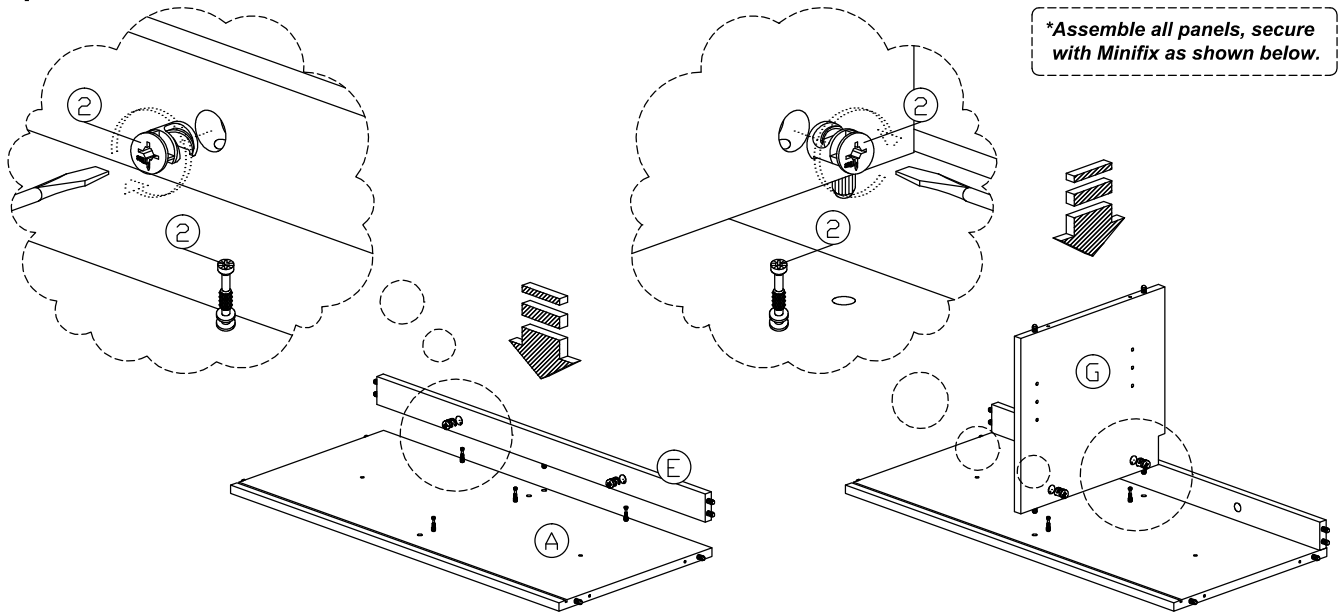


Step 3

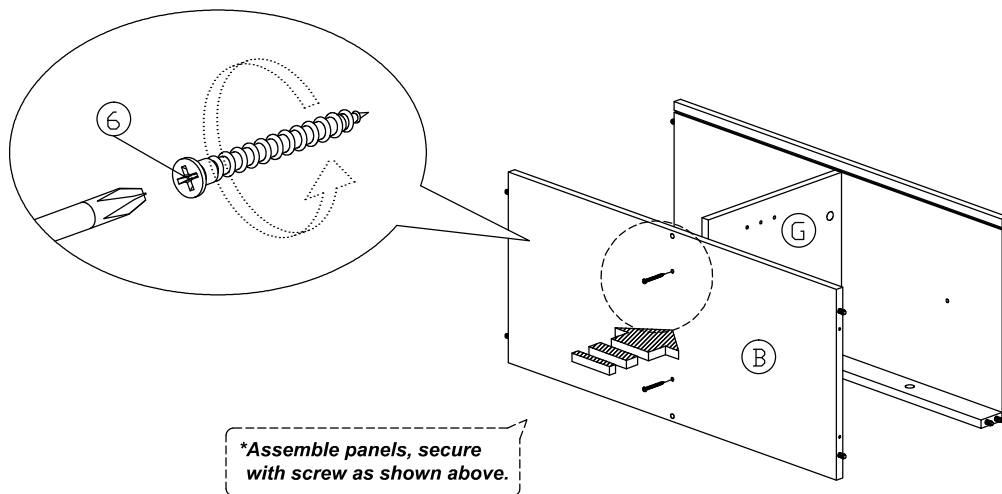


Assembly Instruction

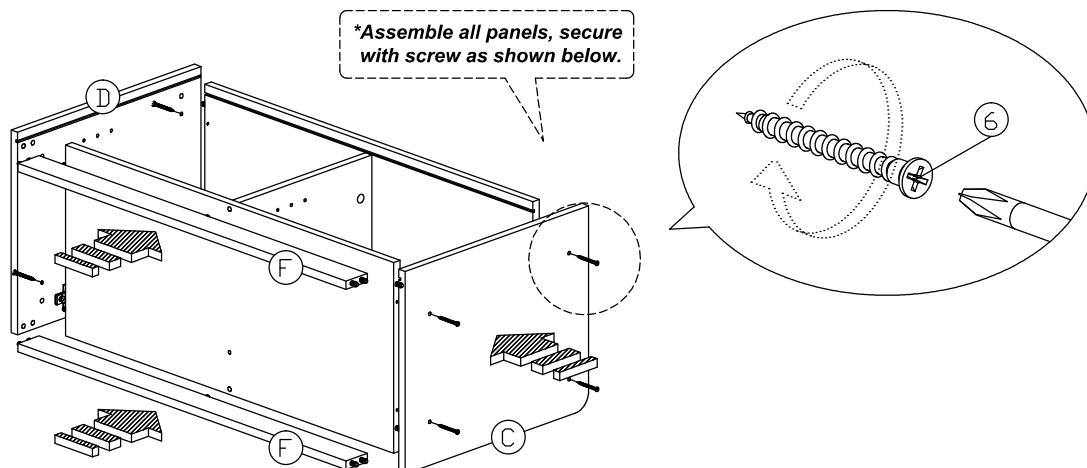
Step 4



Step 5

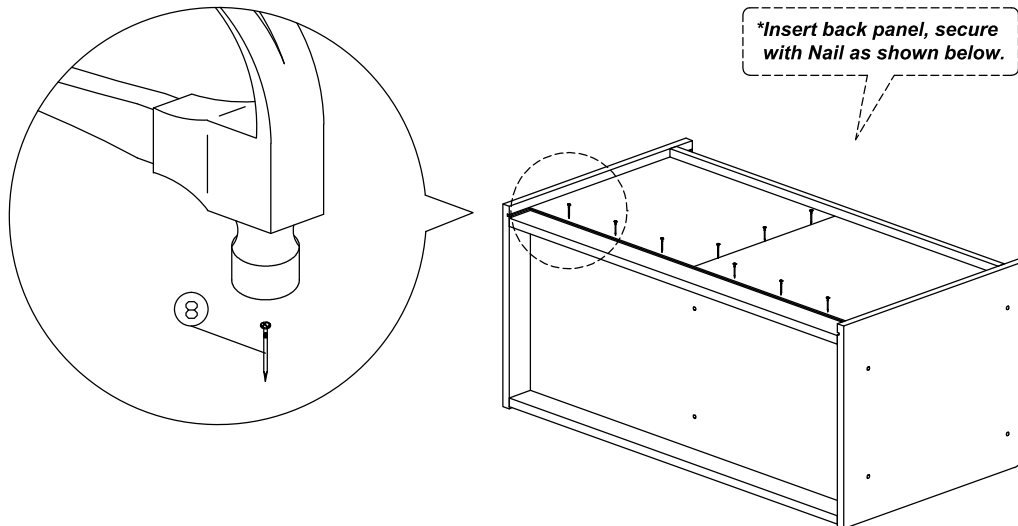


Step 6

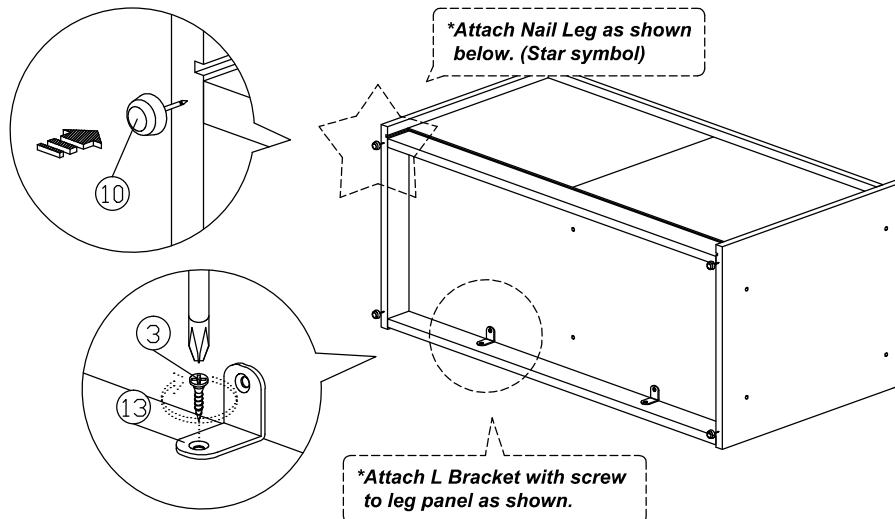


Assembly Instruction

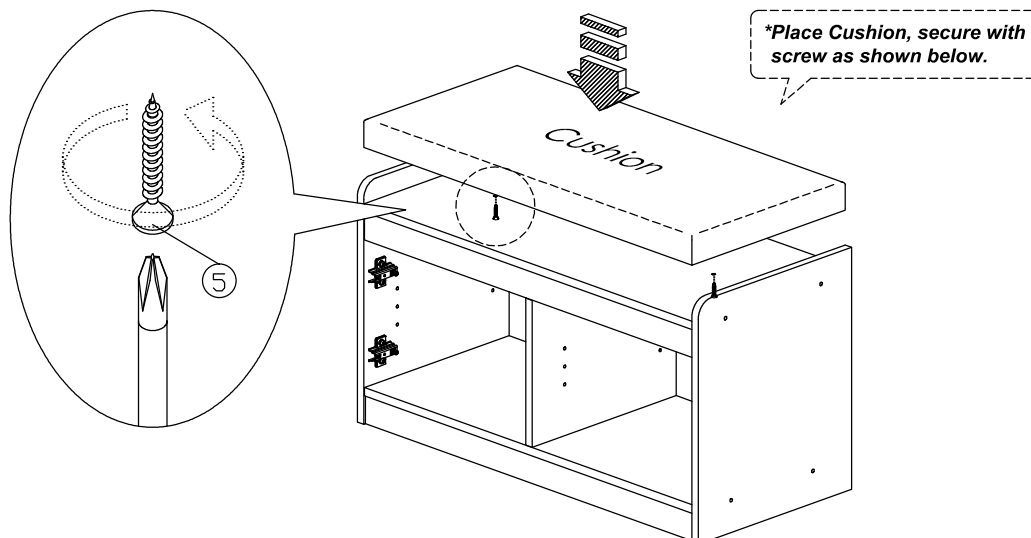
Step 7



Step 8

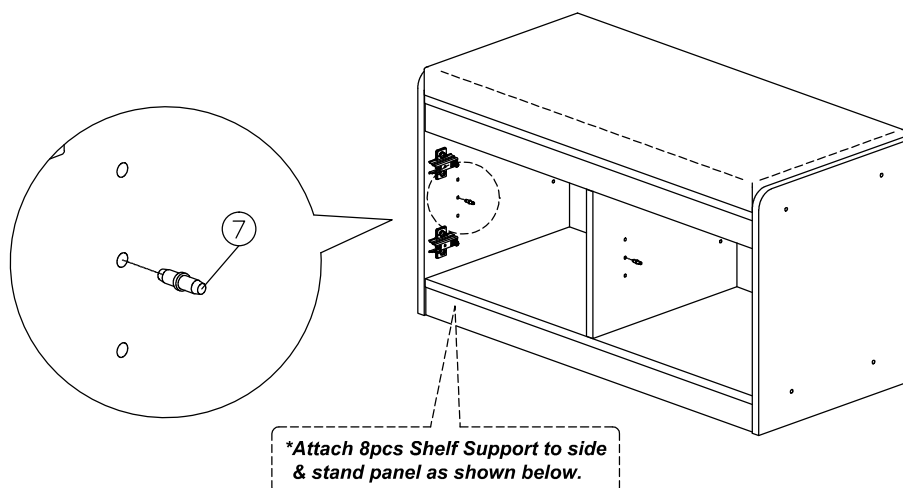


Step 9

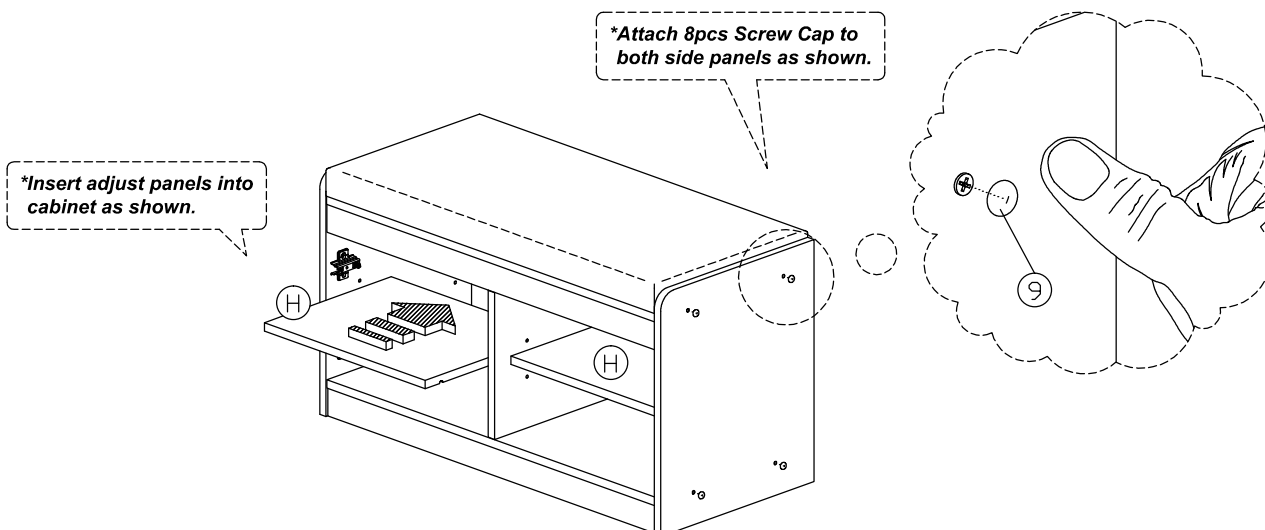


Assembly Instruction

Step 10



Step 11



Step 12

