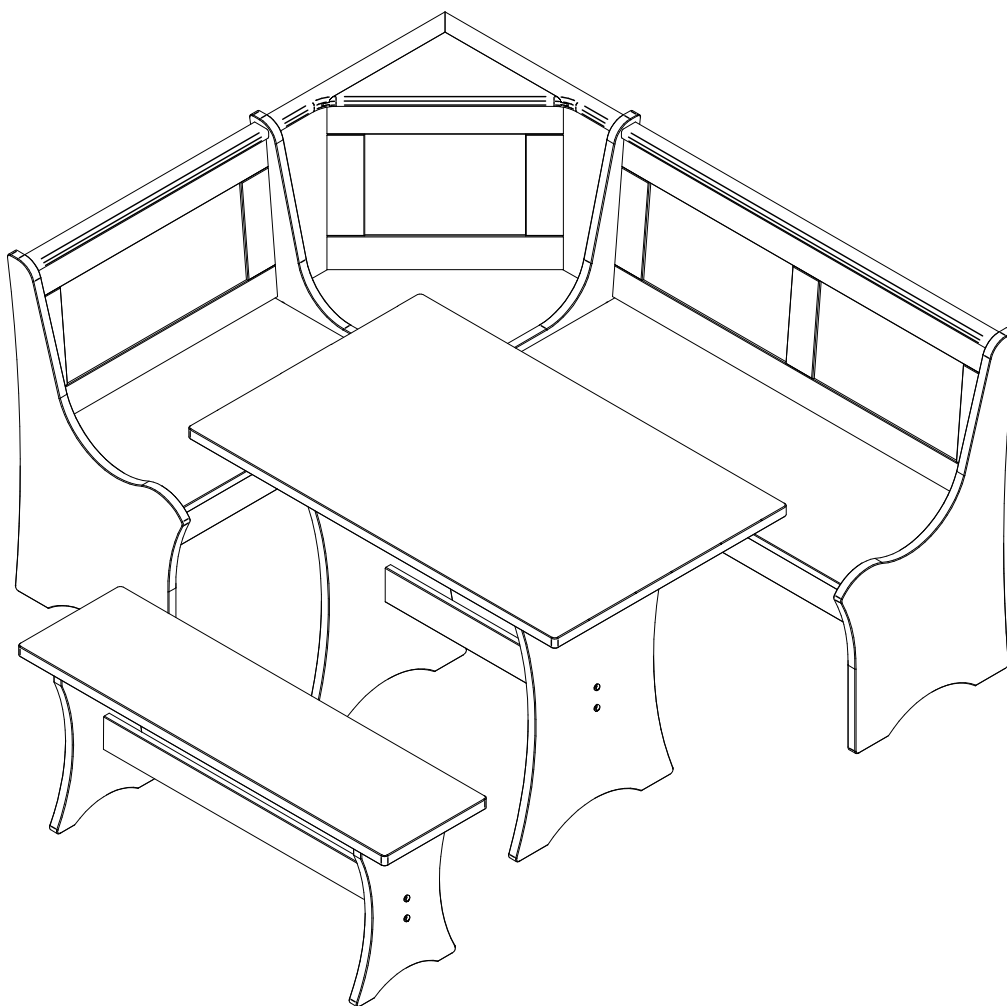


Palma Gray Nook With Table & Bench

SKU# 2023043002



BR4 - 20236

MADE IN BRAZIL

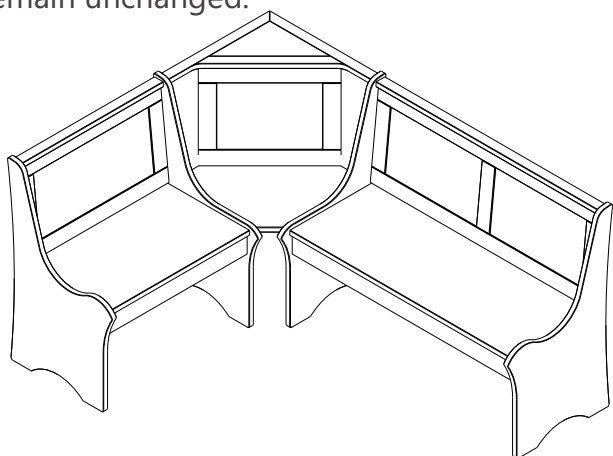
SELECT THE LAYOUT OF THE BENCH

This item reversible and can be installed either with the large bench at your left hand side (left side installation) or with the large bench at your right hand side (right side installation).

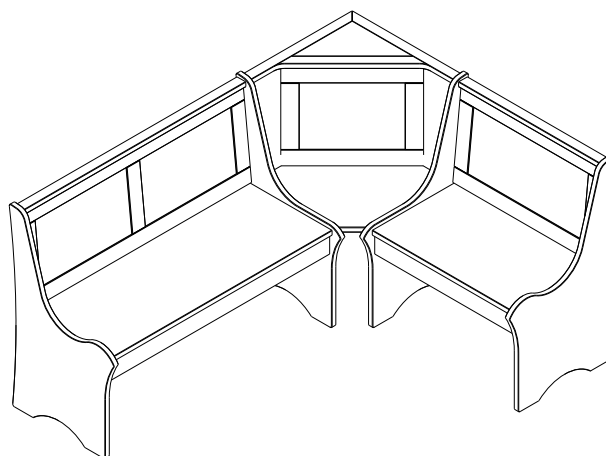
This instruction is made for right hand installation.

If you select the left hand installation then you have to switch all the parts located at right part (06, 07, 17, 18, 19 and 21) to left part and the parts located at left part (05, 08, 13, 14, 15 and 20) to right part.

Attention: outside legs 01 and 04 plus central pieces (03, 04, 09, 10, 11, 12, 22 and 23) remain unchanged.



Right side installation



Left side installation

Note: before starting the assembly process, all parts should be separated according to the item they belong to. For better identification of all parts, please use part identification list on pages 4-5 for the corner bench, part identification list on page 15 for the table and part identification list on page 19 for the bench (simple).

Notice

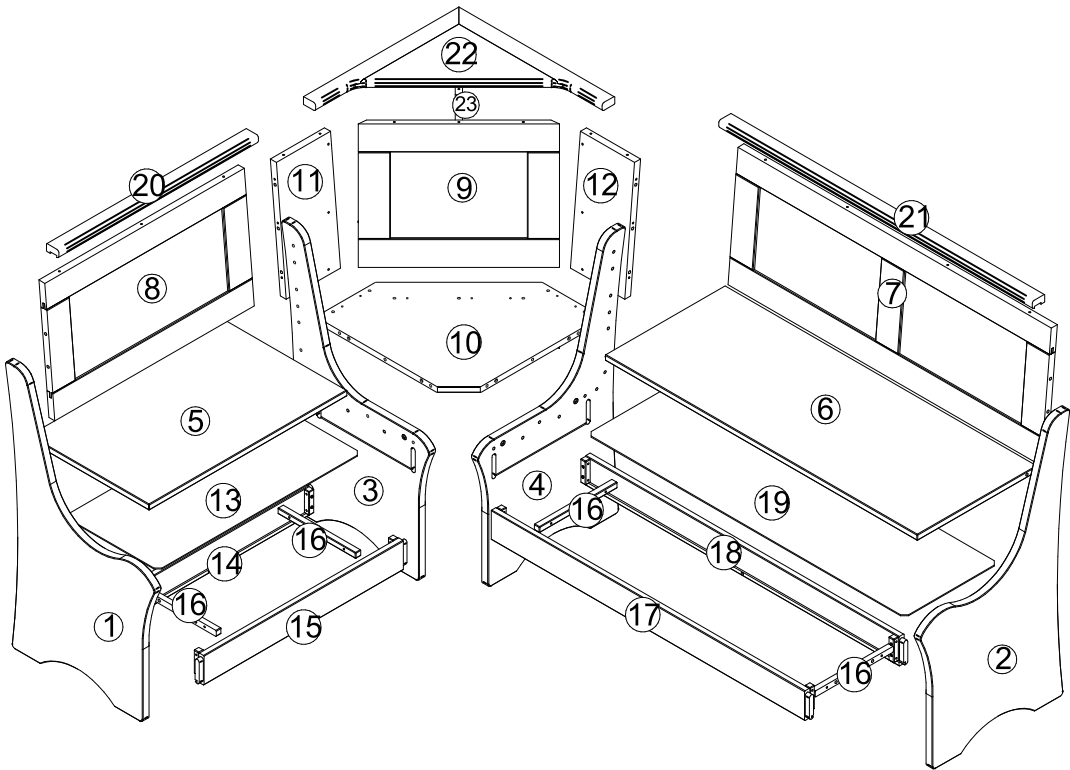
This Product consists of 2 cartons total:

Carton A: #01 #02 #03 #04 #05 #06 #07 #08
#09 #10 #11 #12 #13 #14 #15 #16
#17 #18 #19 #20 #21 #22 #23
+ hardware Pack

Carton B: #24 #25 #26 #27 #28 #29 #30 #31

Please verify you have both 2 cartons


PART LIST - CORNER BENCH



#1	Left Outside Leg	01
#2	Right Outside Leg	01
#3	Middle Leg (Left)	01
#4	Middle Leg (Right)	01
#5	Single Bench Seat	01
#6	Double Bench Seat	01
#7	Double Bench Back rest	01
#8	Single Bench Backer Rest	01
#9	Center Back Panel	01

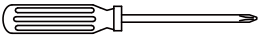
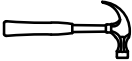
#10	Corner Seat	01
#11	Central Back (Left)	01
#12	Central Back (Right)	01
#13	Single Bench Storage	01
#14	Single Bench Back Rail	01
#15	Single Bench Front	01
#16	Cleat	04
#17	Double Bench Front Rail	01
#18	Double Bench Back Rail	01
#19	Double Bench Storage Bottom	01
#20	Top Rail For Single Back	01
#21	Top Rail For Double Back Rest	01
#22	Corner Top Panel	01
#23	Top Panel Corner Support	01
#00	Corner Bench Hardware pack	01

HARDWARE PACKAGE - CORNER BENCH

A		Wood dowel (8x30mm)	17
B		Wood dowel (8x50mm)	20
C		Screw (4x40mm)	9
D		Screw (4x30mm)	63
E		Screw (7x60mm)	4
F		Plastic Pin	4
G		Allen Wrench	1

NOTE: Find the label of "Hardware Enclosed" on one of the carton corner then follow the red ribbon to get the hardware bag.

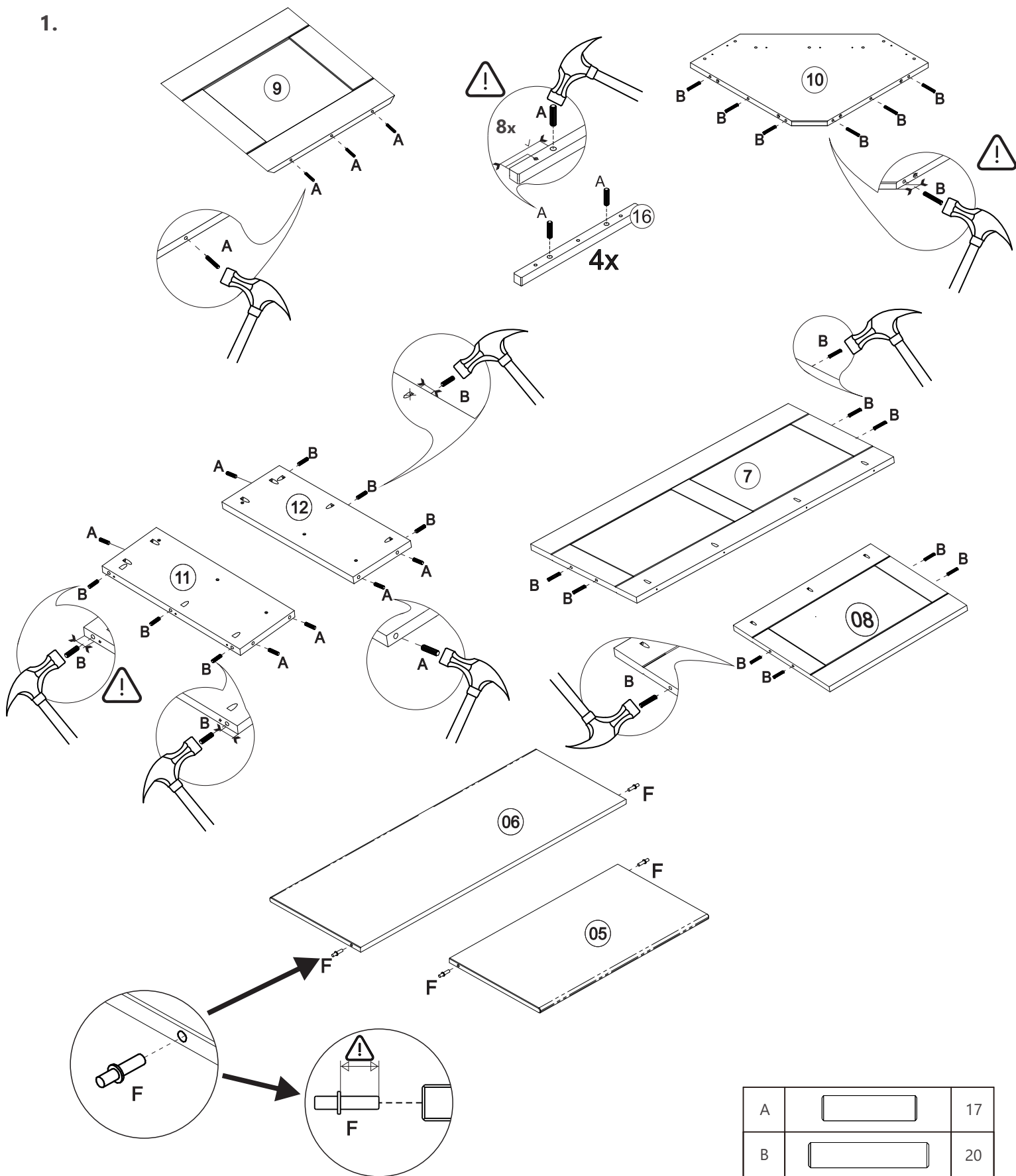
TOOLS REQUIRED

PHILIPS SCREWDRIVER		NOT SUPPLIED
HAMMER		NOT SUPPLIED

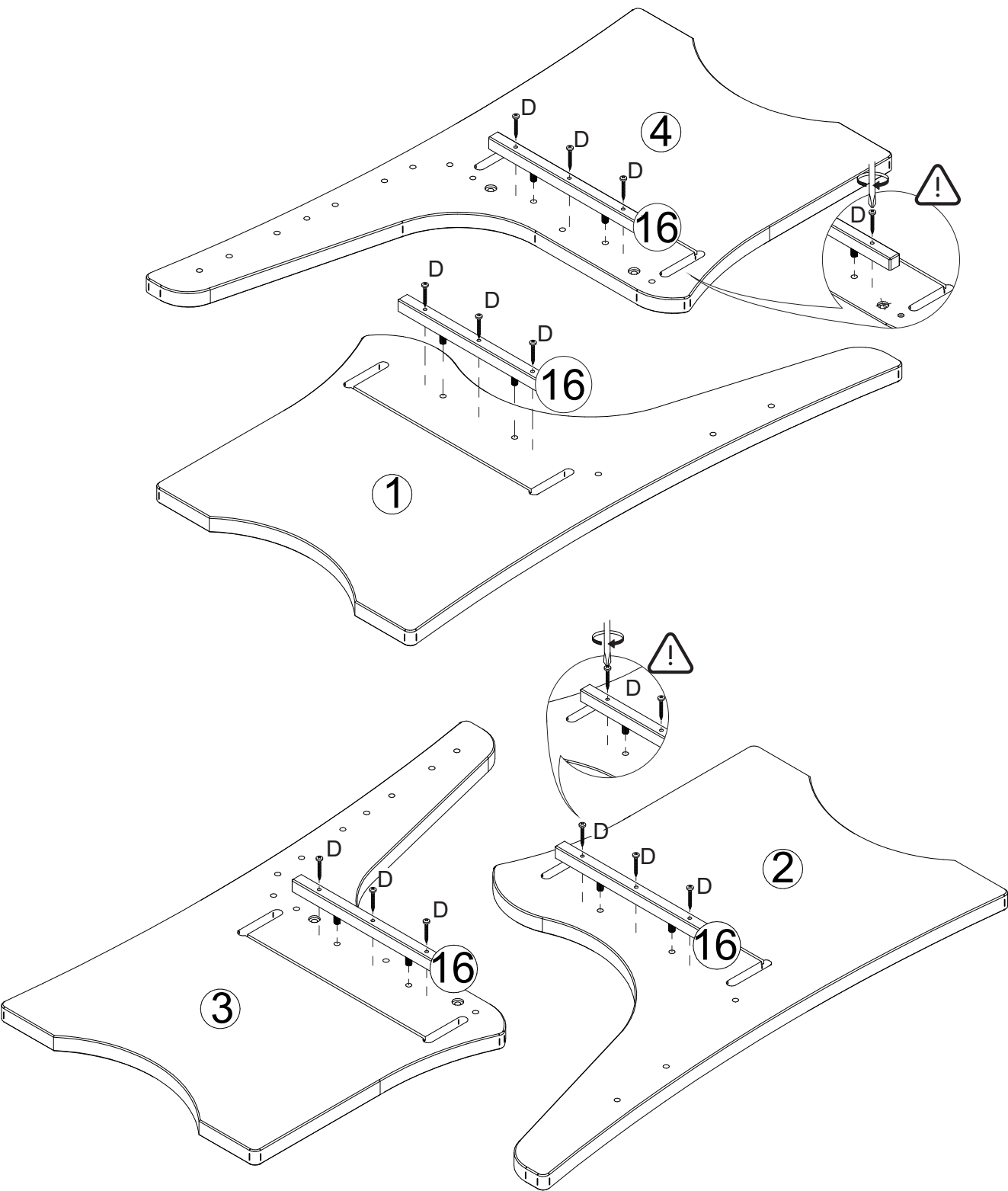
IMPORTANT:


- 1. Do not tighten bolts completely until all bolts are completely lined up and inserted into holes / nuts.
- 2. Do not over tighten screws and bolts to avoid stripping.
- 3. Please use hand tools to assemble this product. Do not use power tools.
- 4. For ease of assembly, two adults are recommended

1.



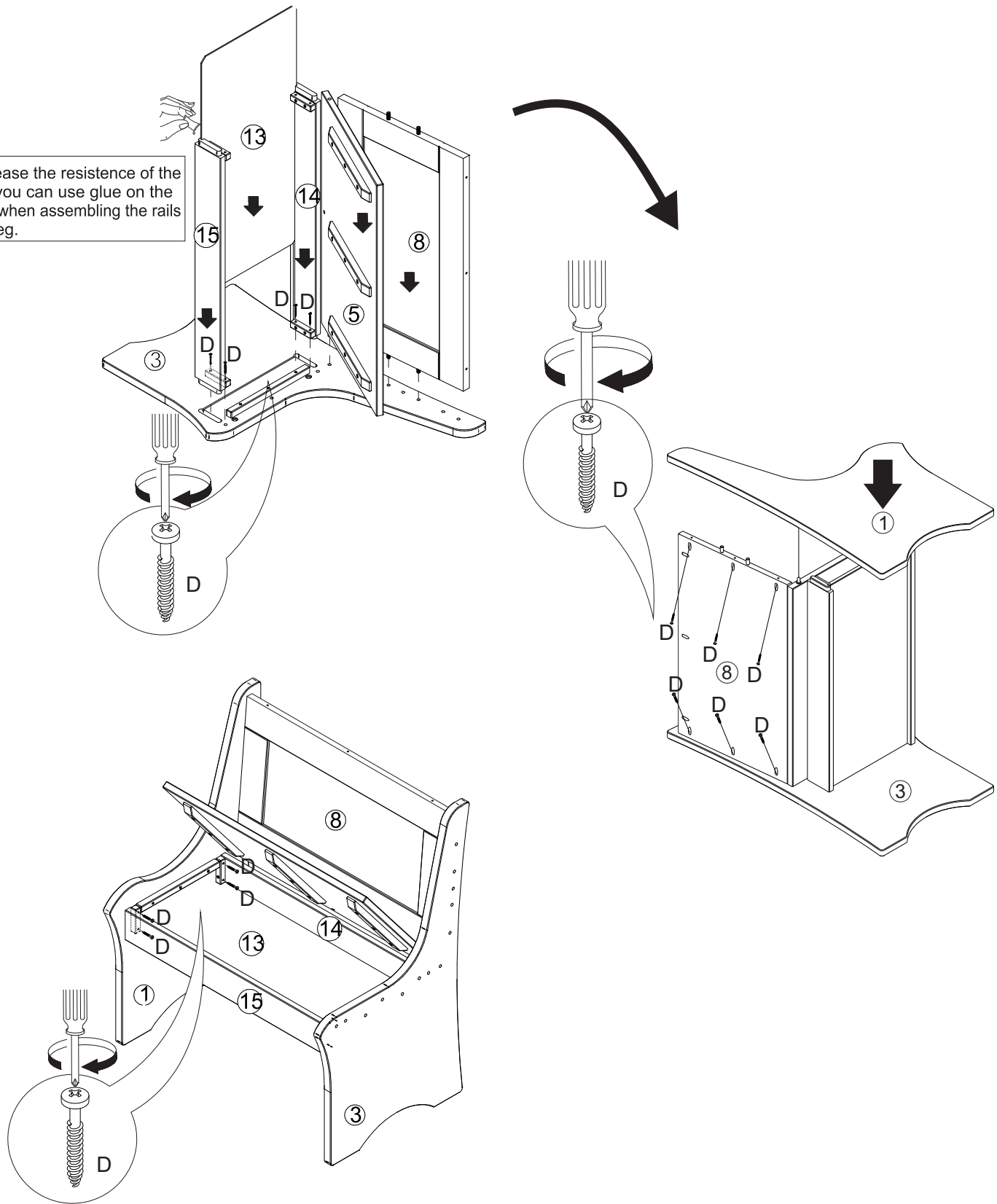
2.

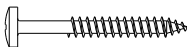


D		12
---	---	----

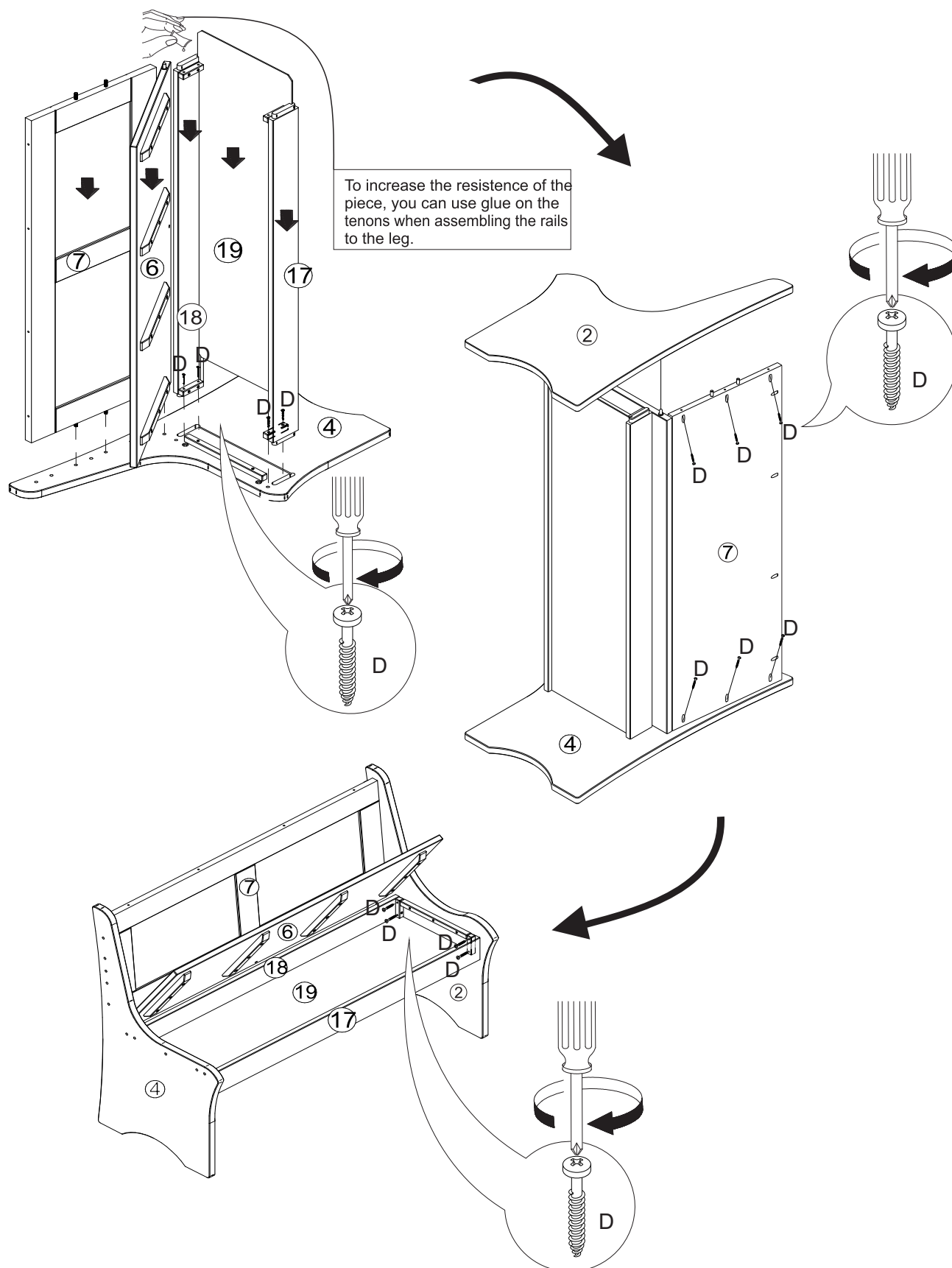
3.


To increase the resistance of the piece, you can use glue on the tenons when assembling the rails to the leg.



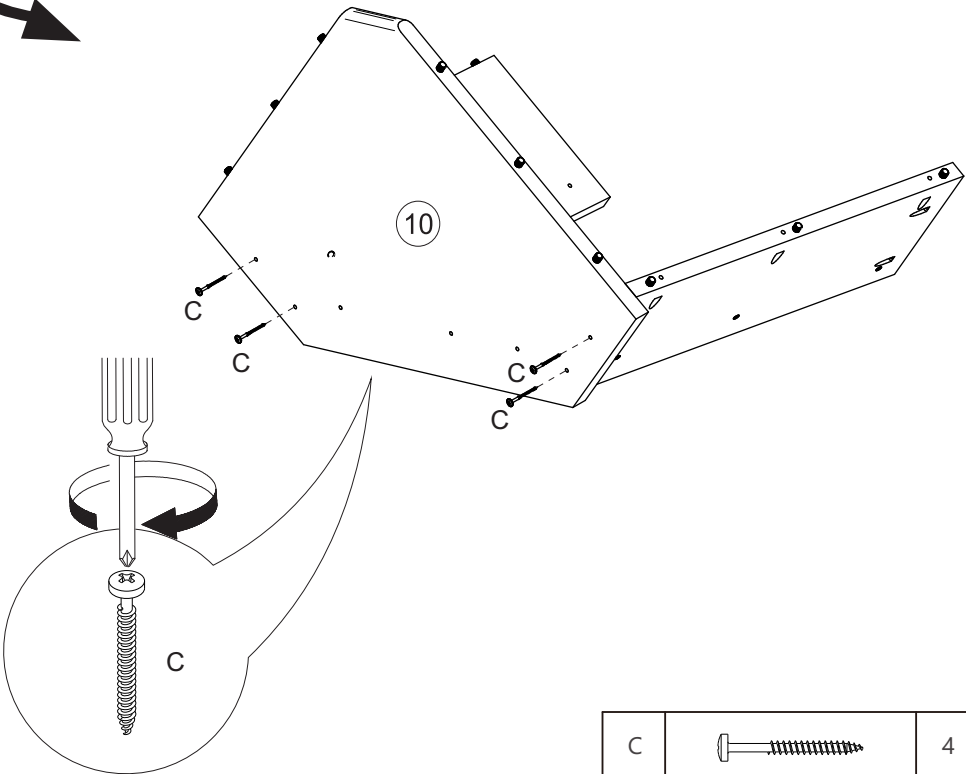
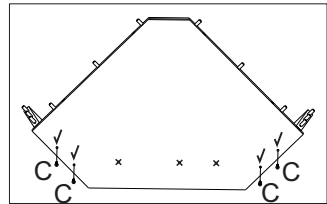
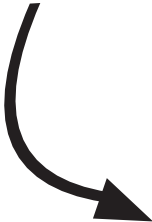
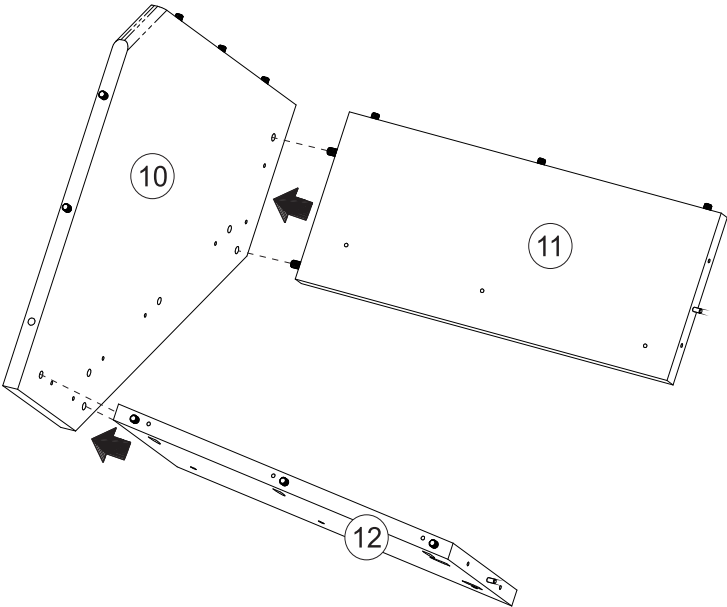
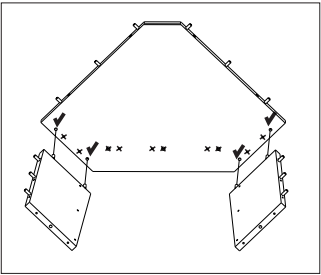
D		14
---	---	----

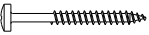
4.



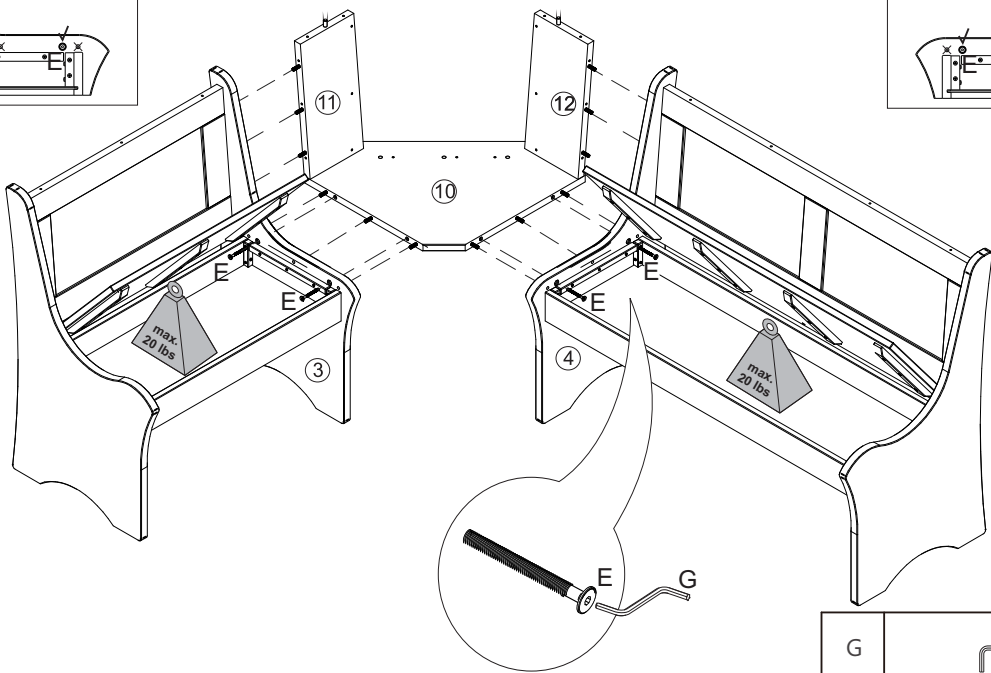
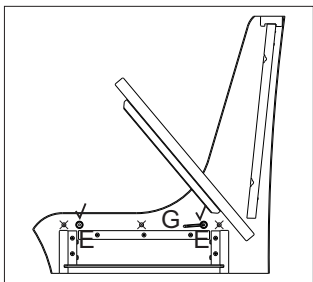
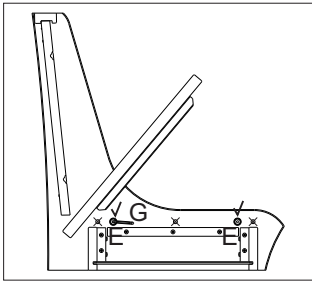
D		14
---	---	----

5.



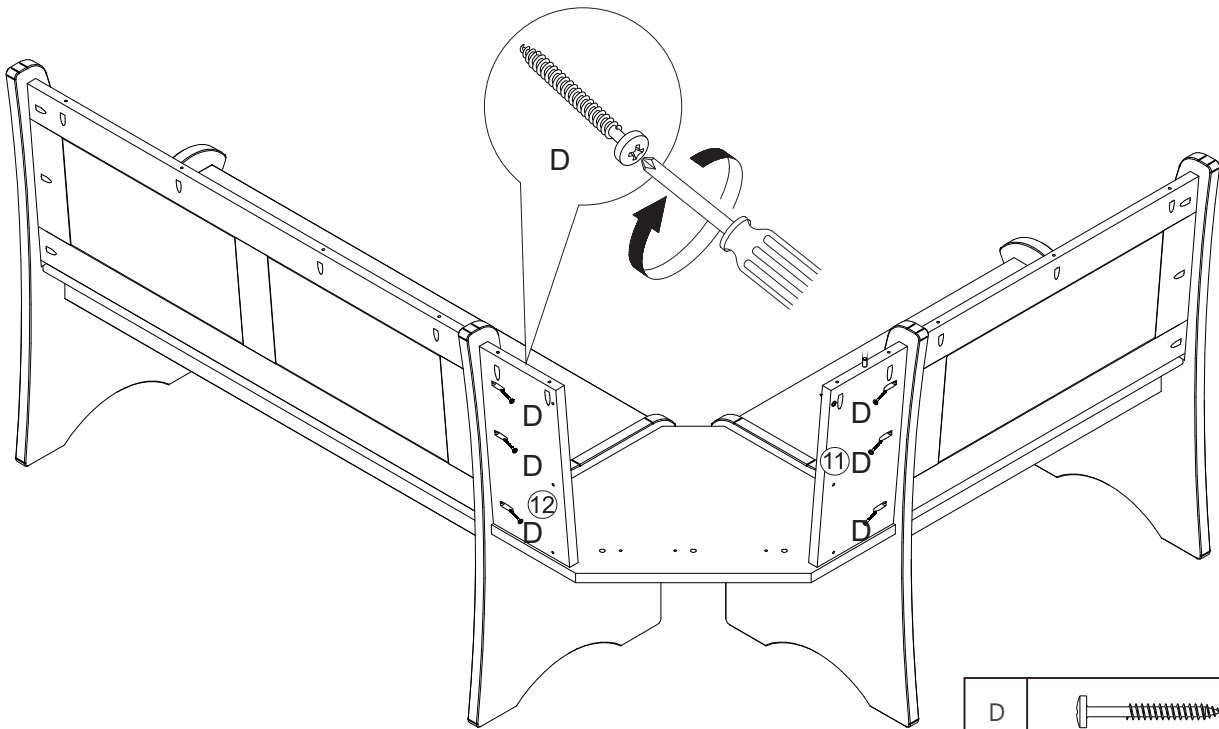
C		4
---	---	---

6.



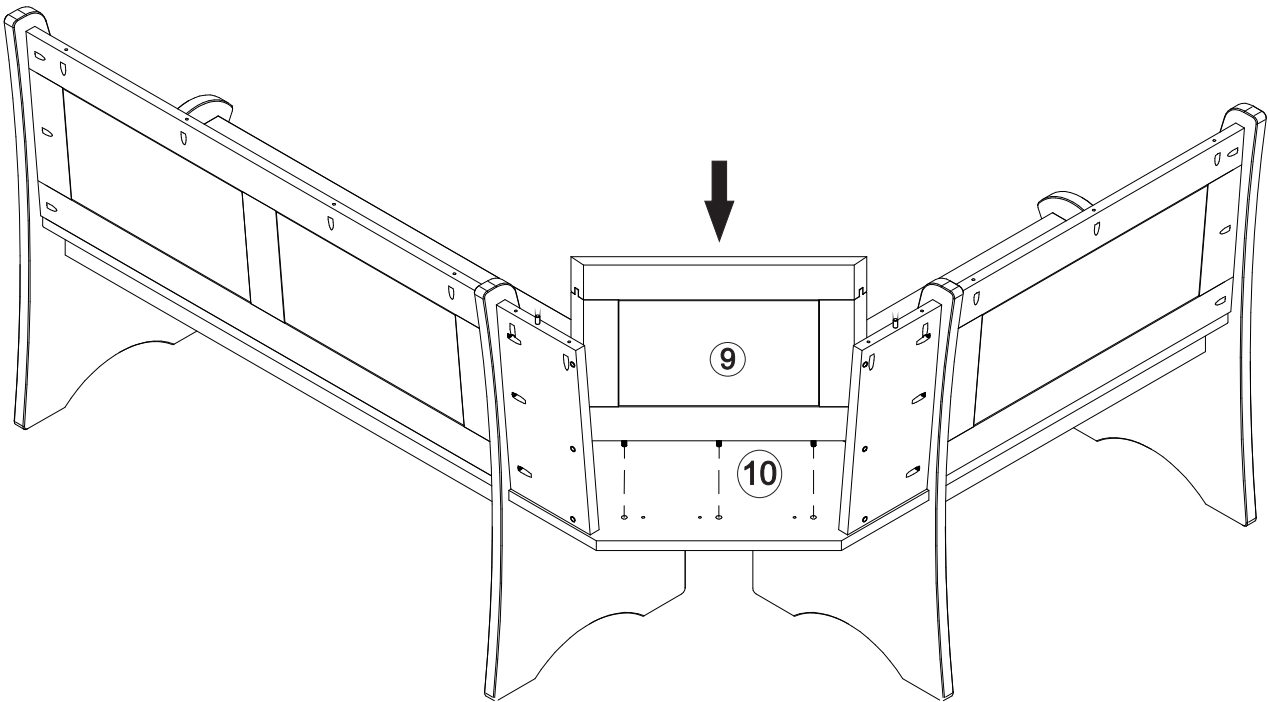
G		1
E		4

7.

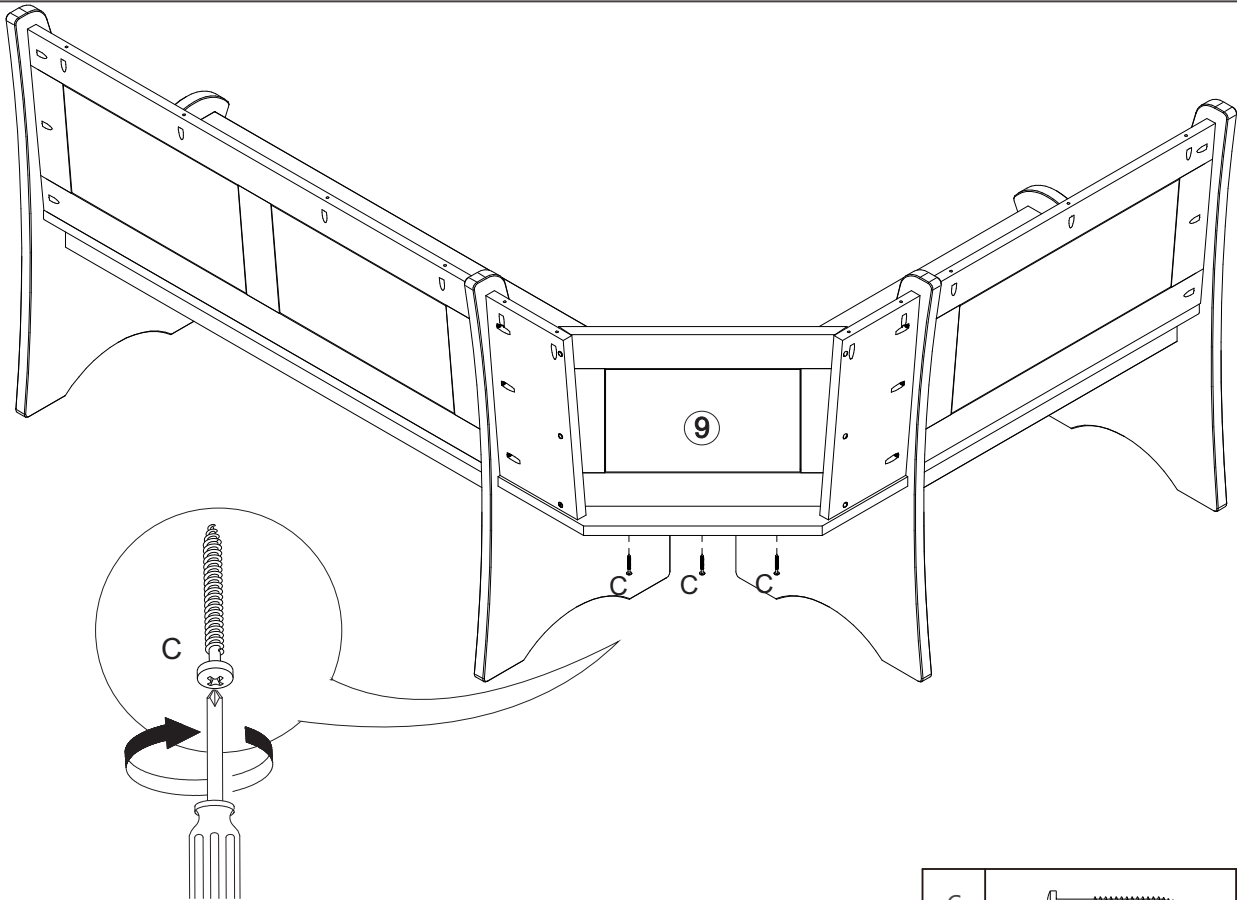


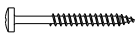
D		6
---	--	---

8.

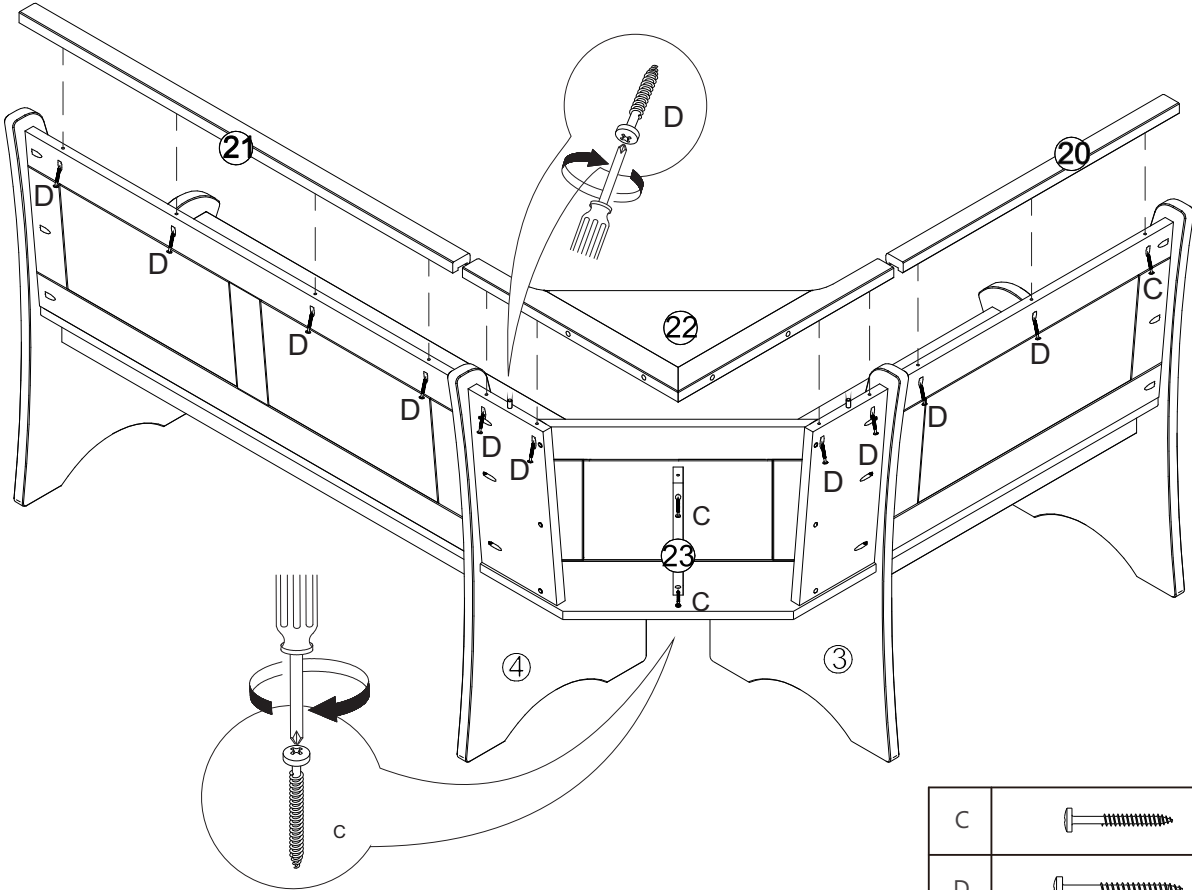


9.

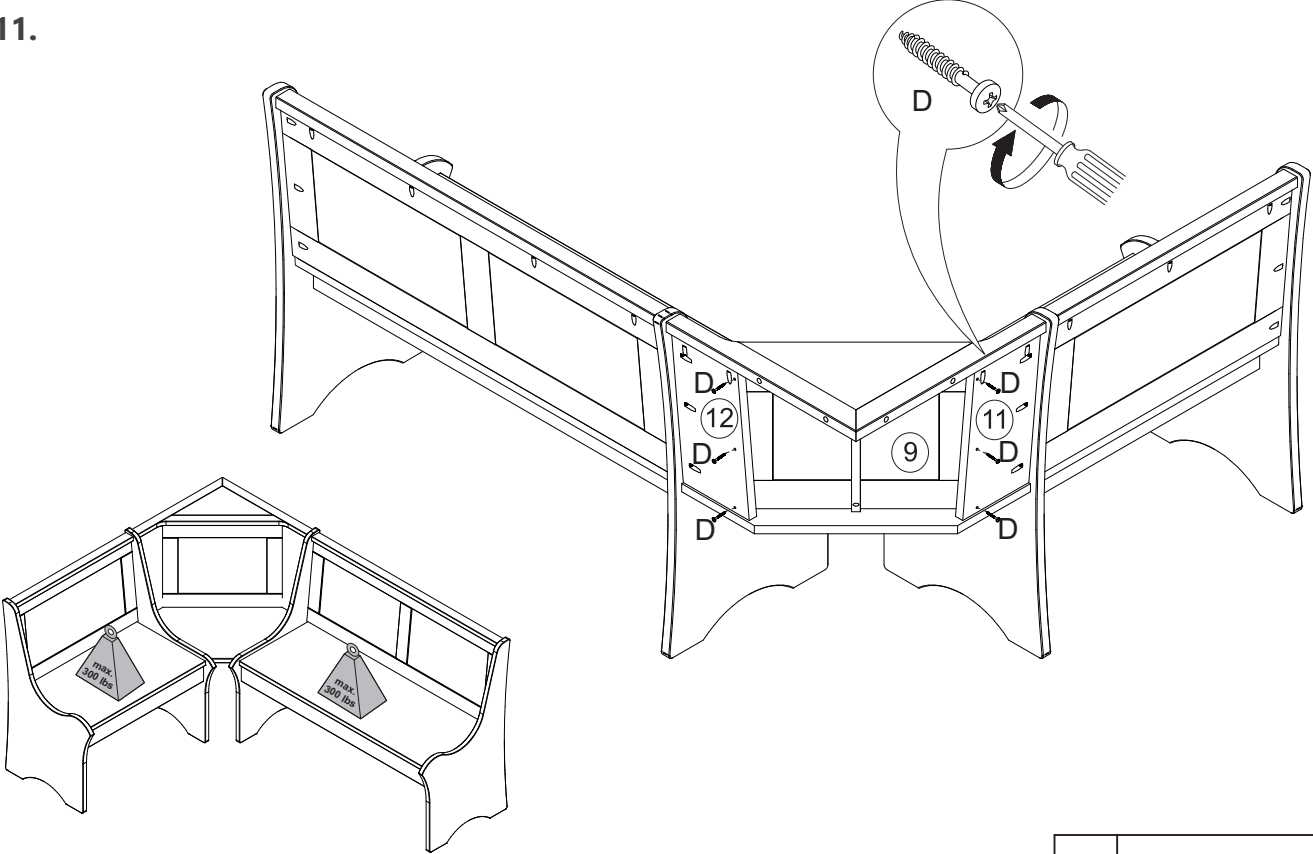


C		3
---	---	---

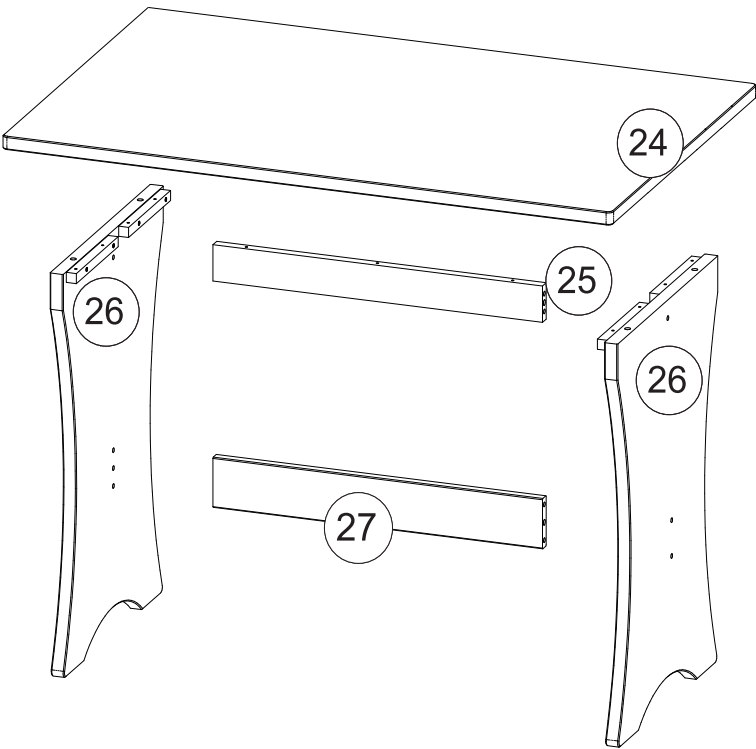
10.



11.



PART LIST - TABLE



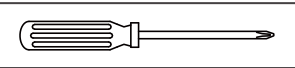
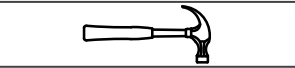
#24	Table Top	01
#25	Table Top Support	01
#26	Legs	02
#27	Crossbar	01
#00	Table Hardware Pack	01

HARDWARE PACKAGE - TABLE

E		Screw (7x60mm)	6
G		Allen Wrench	1
H		Screw (4x35mm)	8
I		Wood Dowel (10x50mm)	10
J		Felt	4
K		Screw Cap	6
L		Screw (4,5x60mm)	3

NOTE: Find the label of "Hardware Enclosed" on one of the carton corner then follow the red ribbon to get the hardware bag.

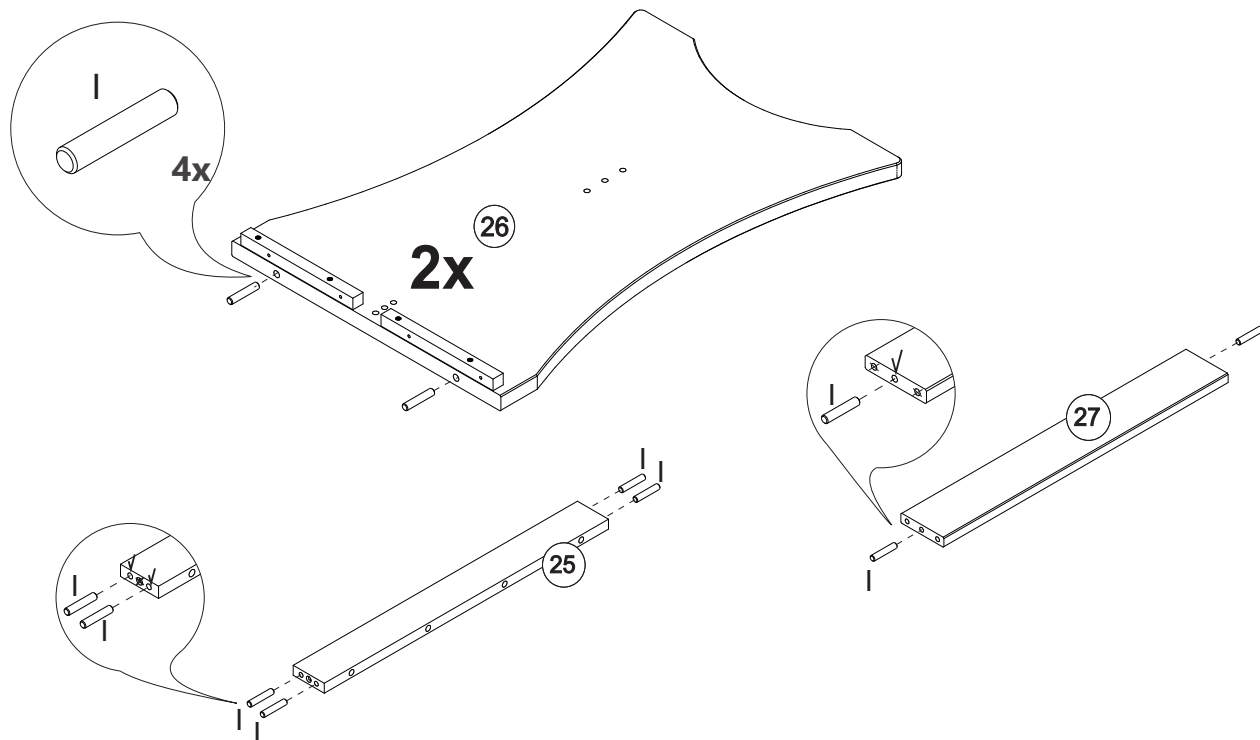
TOOLS REQUIRED

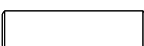
PHILIPS SCREWDRIVER		NOT SUPPLIED
HAMMER		NOT SUPPLIED

IMPORTANT:

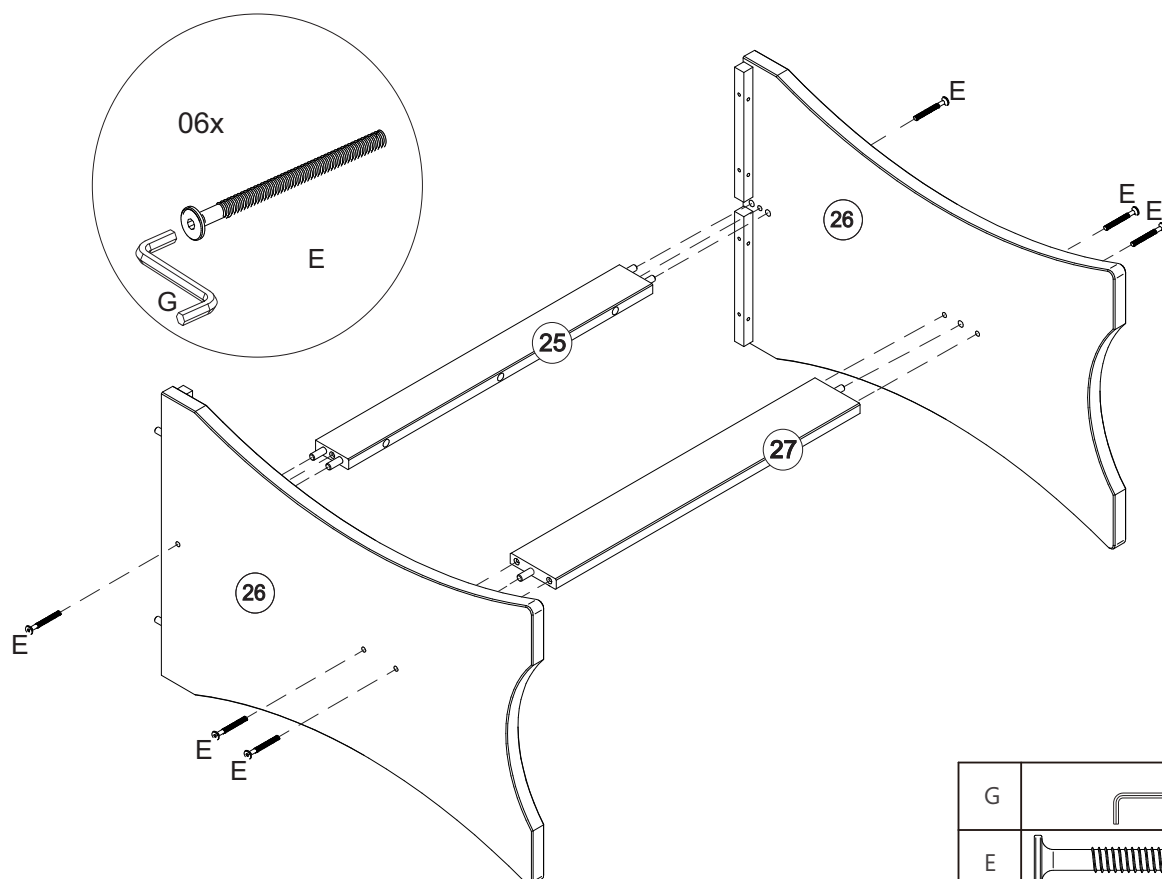
- 1. Do not tighten bolts completely until all bolts are completely lined up and inserted into holes / nuts.
- 2. Do not over tighten screws and bolts to avoid stripping.
- 3. Please use hand tools to assemble this product. Do not use power tools.
- 4. For ease of assembly, two adults are recommended

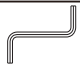
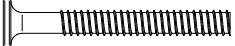
1.



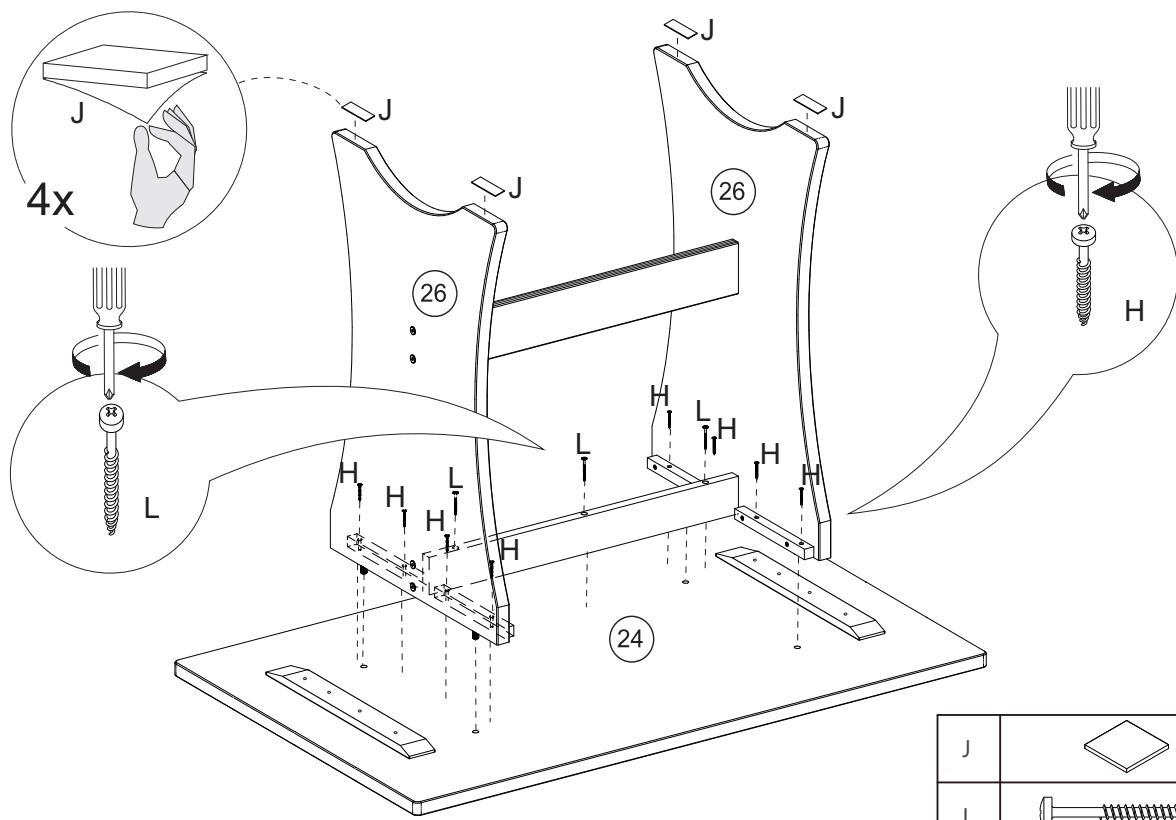
I		10
---	---	----

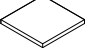
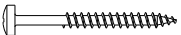
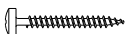
2.



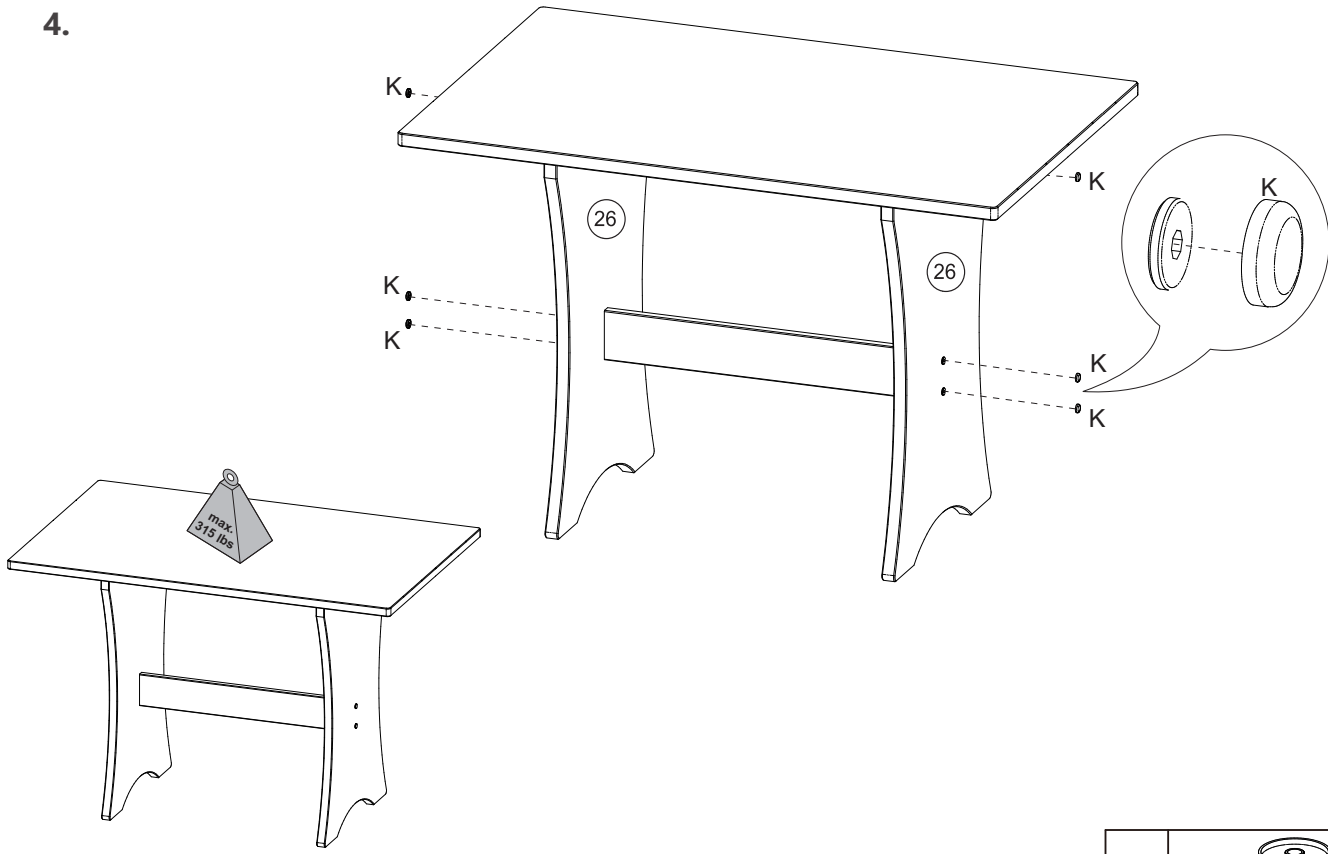
G		1
E		6


3.



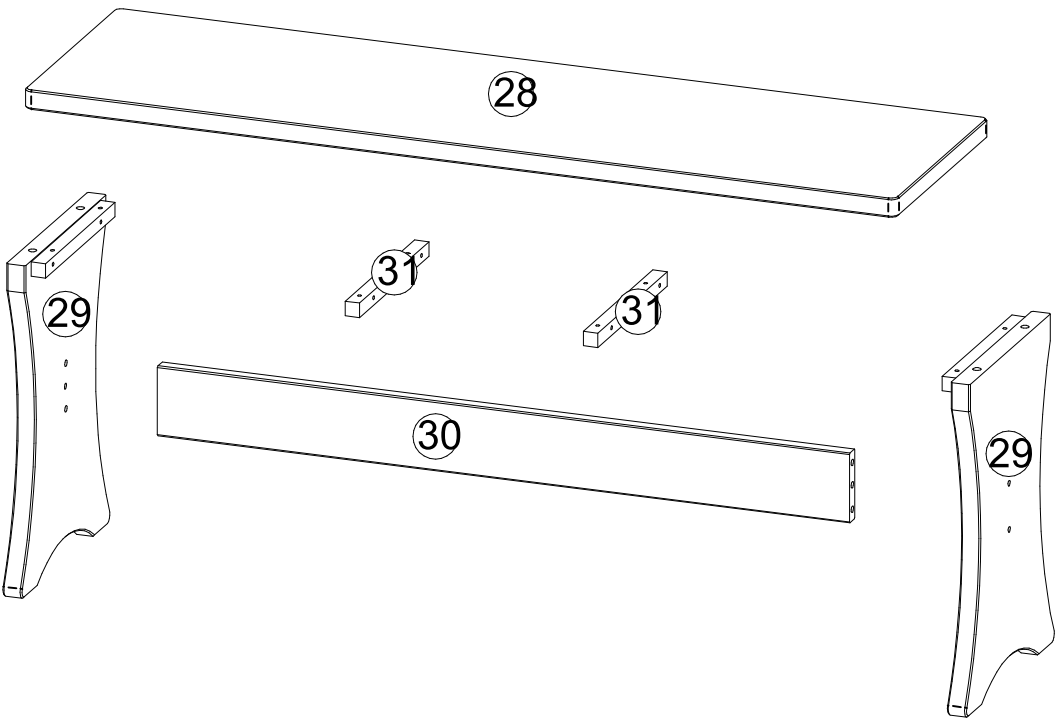
J		4
L		3
H		8

4.



K		6
---	---	---

PART LIST - SINGLE BENCH



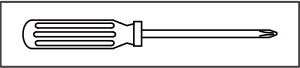
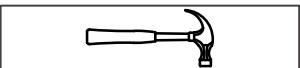
#28	Seat	01
#29	Legs	02
#30	Crossbar	01
#31	Cleat	02
#00	Simple Bench Hardware Pack	01

HARDWARE PACKAGE - SINGLE BENCH

E		Screw (7x60mm)	4
G		Allen Wrench	1
H		Screw (4x35mm)	8
I		Wood Dowel (10x50mm)	6
J		Felt	4
K		Screw Cap	4

NOTE: Find the label of "Hardware Enclosed" on one of the carton corner then follow the red ribbon to get the hardware bag.

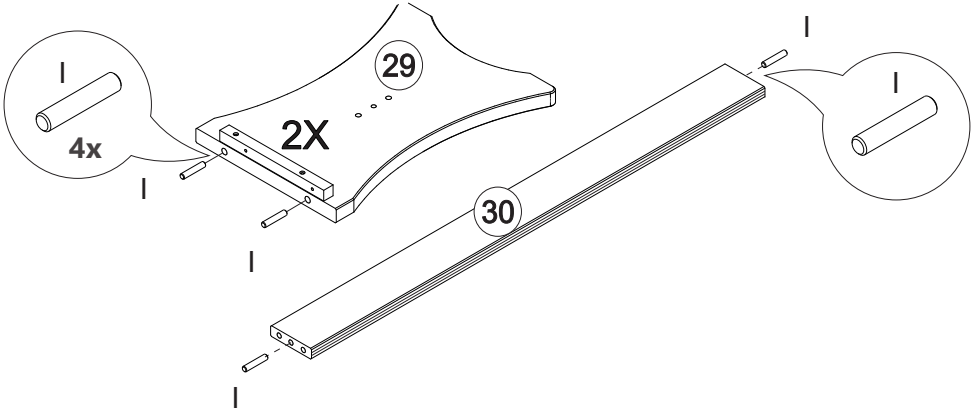
TOOLS REQUIRED

PHILIPS SCREWDRIVER		NOT SUPPLIED
HAMMER		NOT SUPPLIED

IMPORTANT:

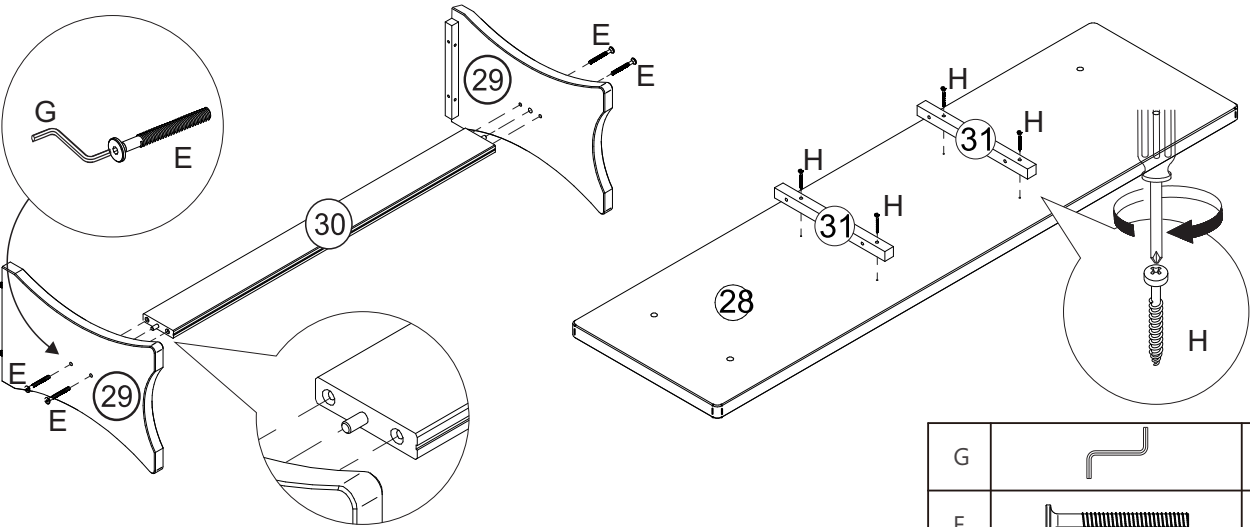
- 1. Do not tighten bolts completely until all bolts are completely lined up and inserted into holes / nuts.
- 2. Do not over tighten screws and bolts to avoid stripping.
- 3. Please use hand tools to assemble this product. Do not use power tools.
- 4. For ease of assembly, two adults are recommended

1.



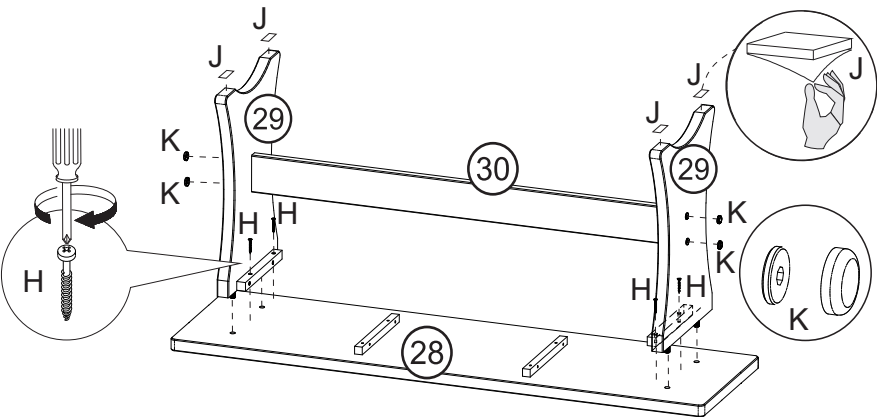
I		6
---	--	---

2.



G		1
E		4
H		4

3.



H		4
J		4
K		4