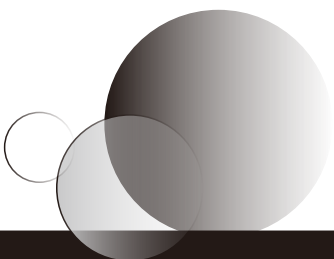


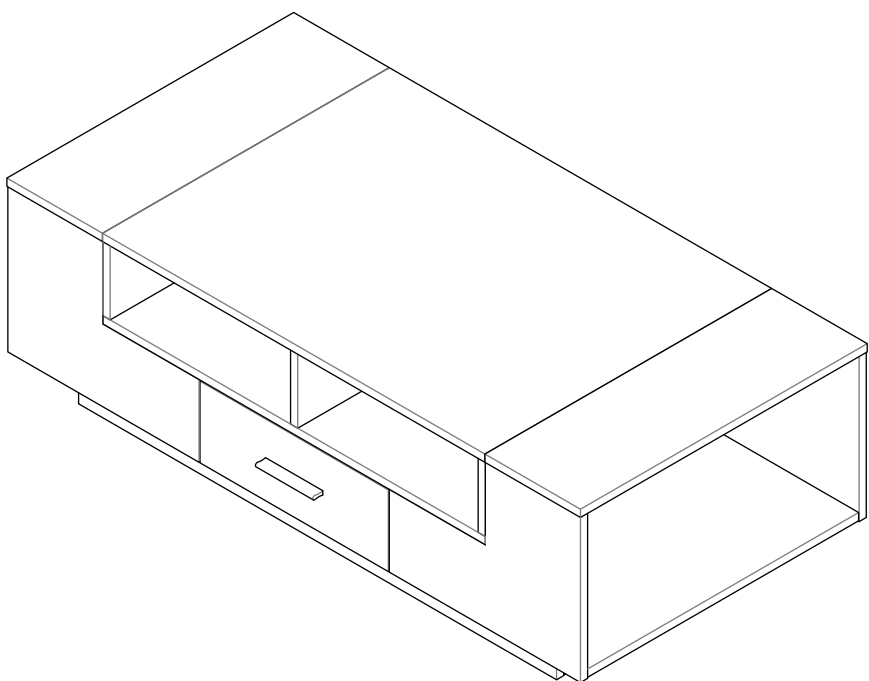


**WARNING: To avoid serious personal injury:**

- Carefully and strictly follow assembly instructions. Improper assembly of furniture can result in structural failure, instability of the product, or tip-over.
- Monitor and carefully control the assembly components. These include small parts and hardware that may present a choking hazard to small children. Bob's furniture should be assembled only by responsible adults and children should not be involved in the assembly process.
- Where provided, wall mounting hardware should always be used as prescribed in these instructions to anchor furniture to wall. Proper use of the wall mounting hardware can significantly reduce the potential for furniture tip-over and crushing injuries.

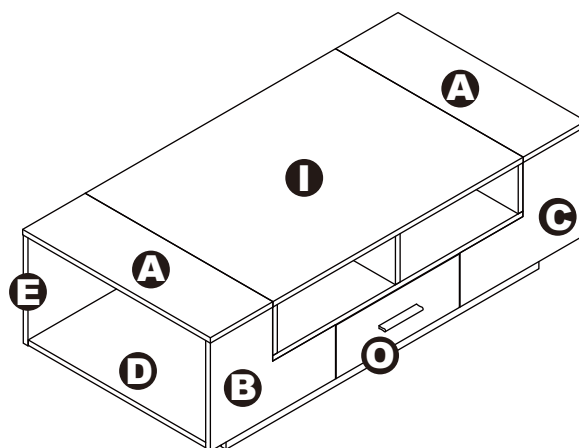


# ASSEMBLY INSTRUCTIONS



## COFFEE TABLE

# COFFEE TABLE



## DIMENSIONS

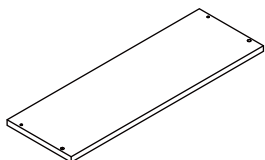
Width - 47.24"

Depth - 23.62"

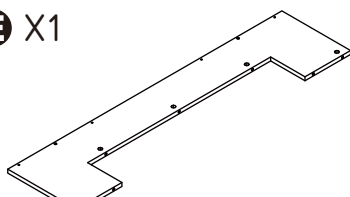
Height - 15.12"

## PARTS LIST

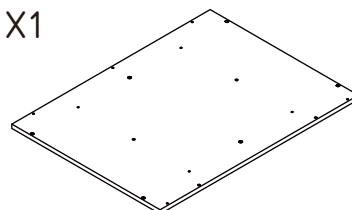
**A** X2



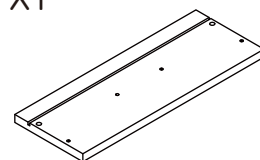
**E** X1



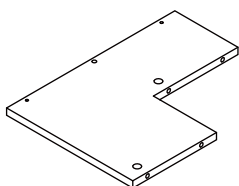
**J** X1



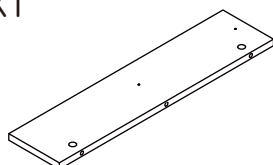
**O** X1



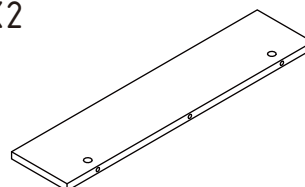
**B** X1



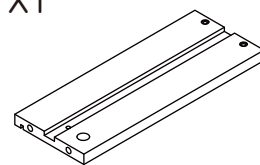
**F** X1



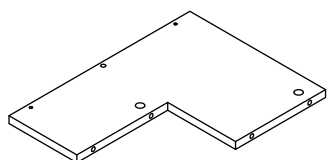
**K** X2



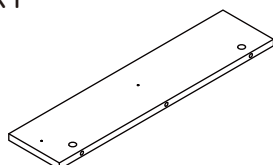
**P** X1



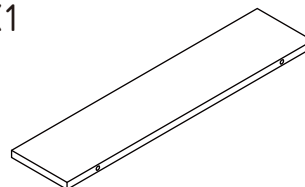
**G** X1



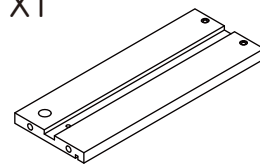
**G** X1



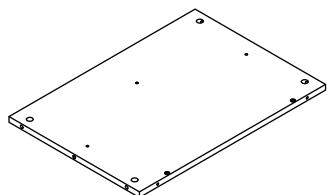
**L** X1



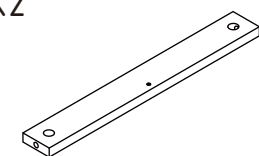
**Q** X1



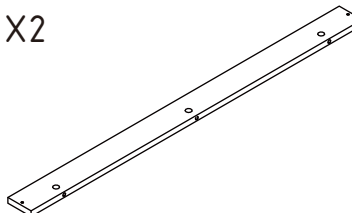
**D** X2



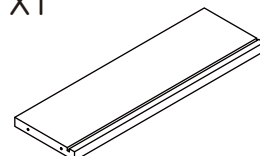
**H** X2



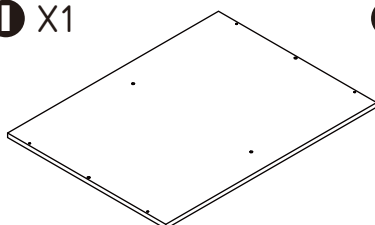
**M** X2



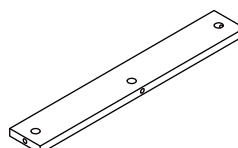
**R** X1



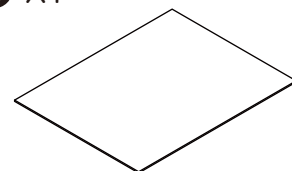
**I** X1



**N** X2



**S** X1



## HARDWARE LIST

**1** X43



**2** X43



**3** X18



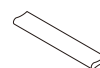
**4** X4



**5** X10



**6** X1



**7** X2



**8** X2



**9** X2



**10** X4

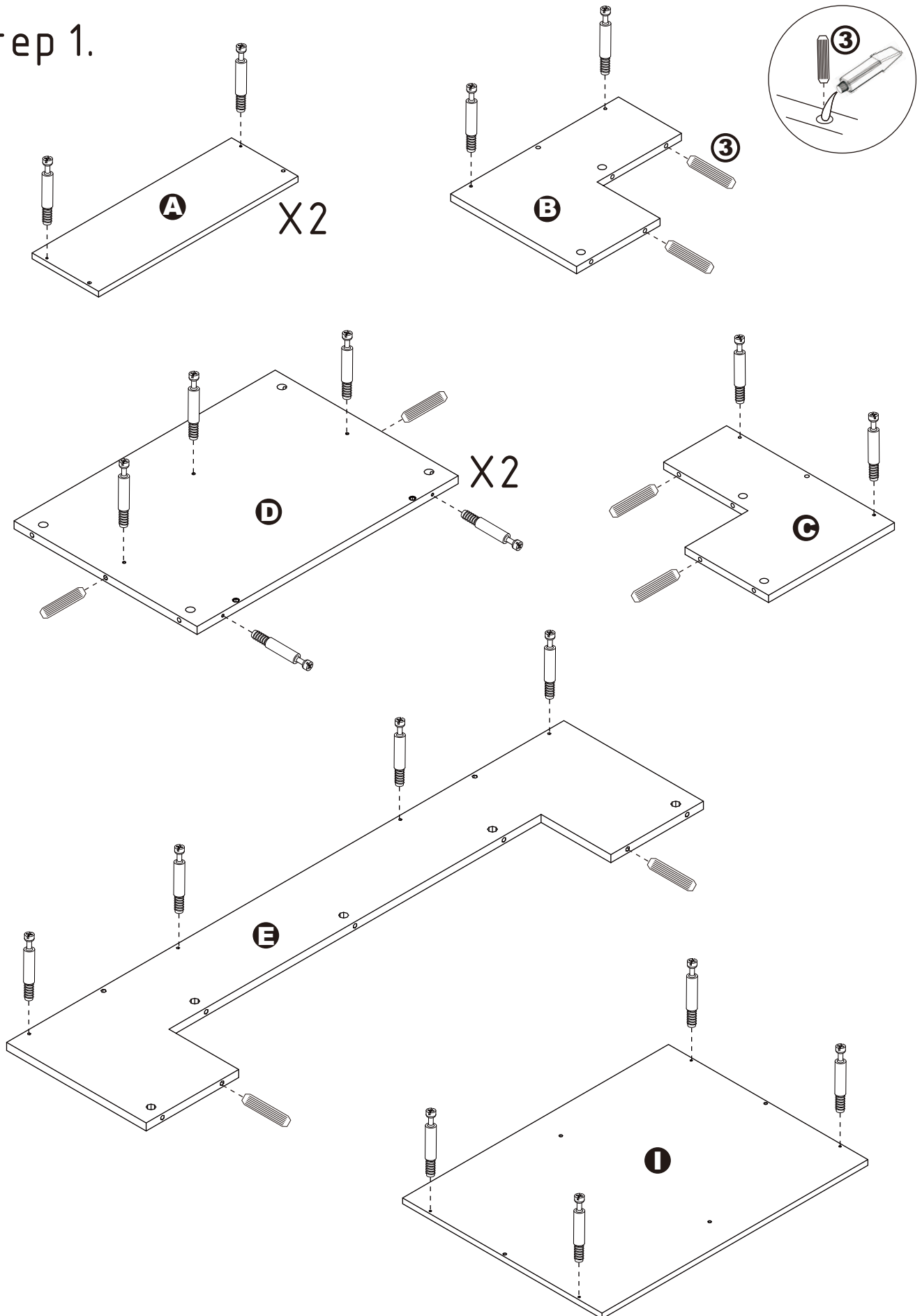


**11** X6



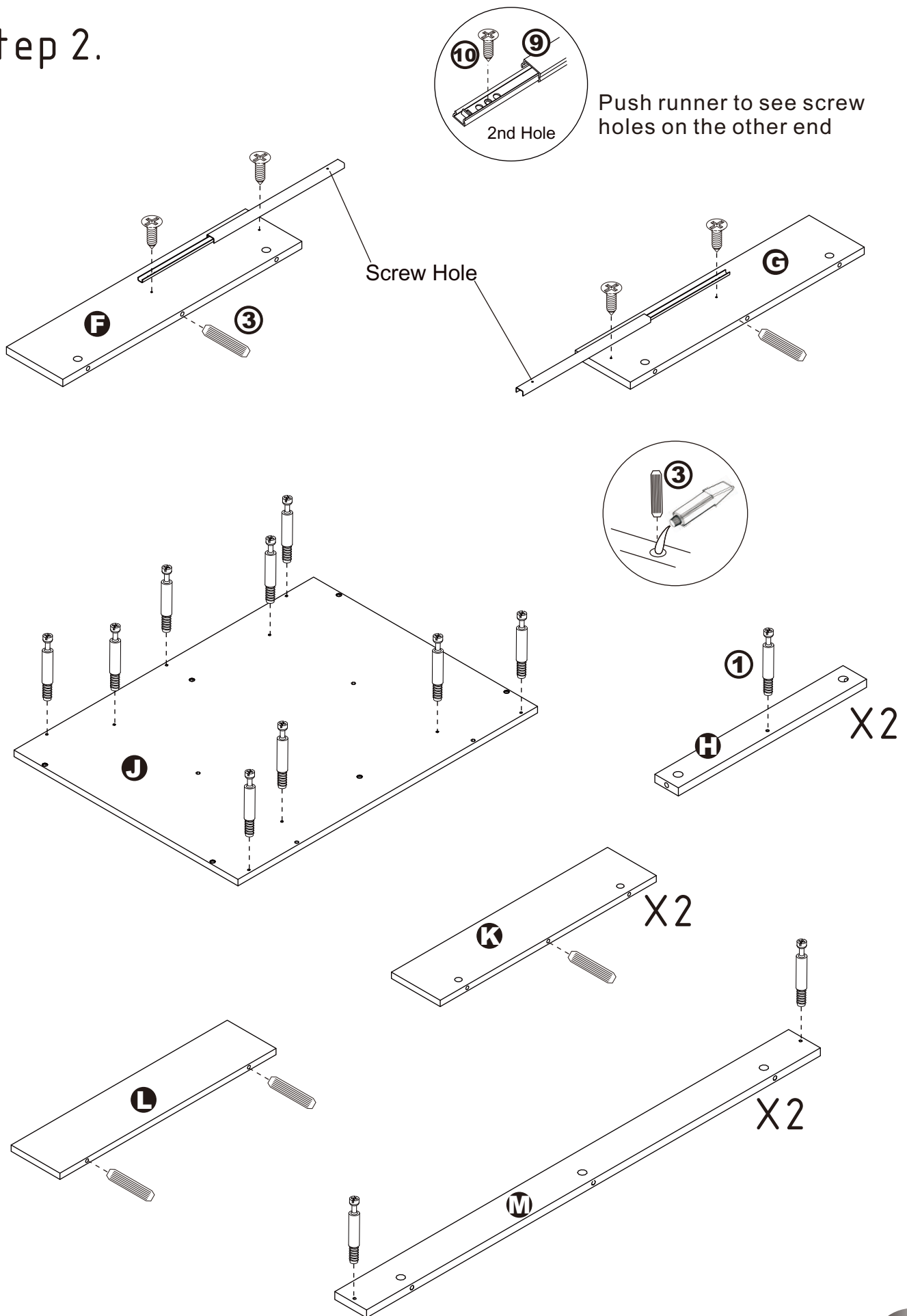
# ASSEMBLY INSTRUCTIONS

## Step 1.



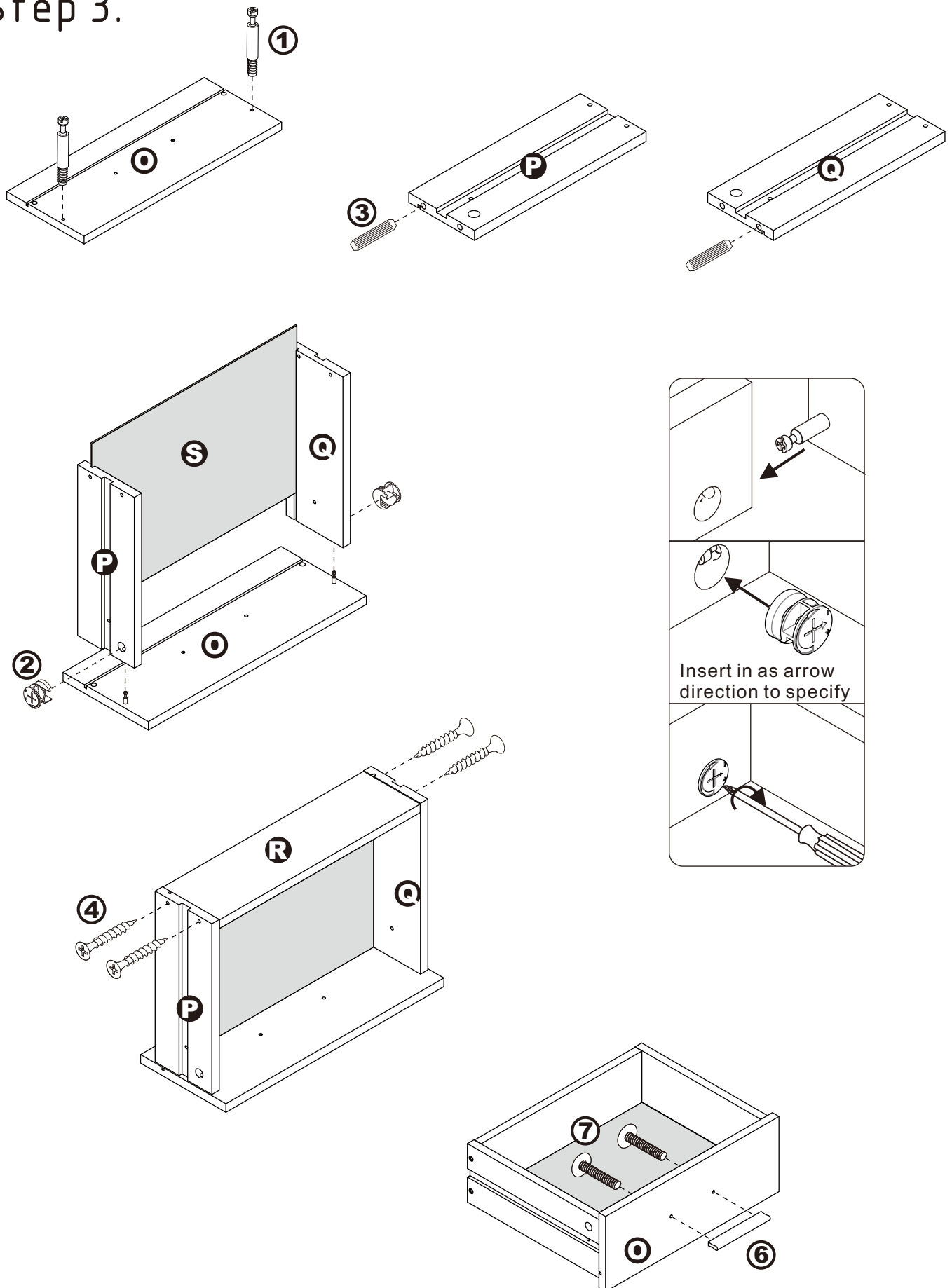
# ASSEMBLY INSTRUCTIONS

## Step 2.



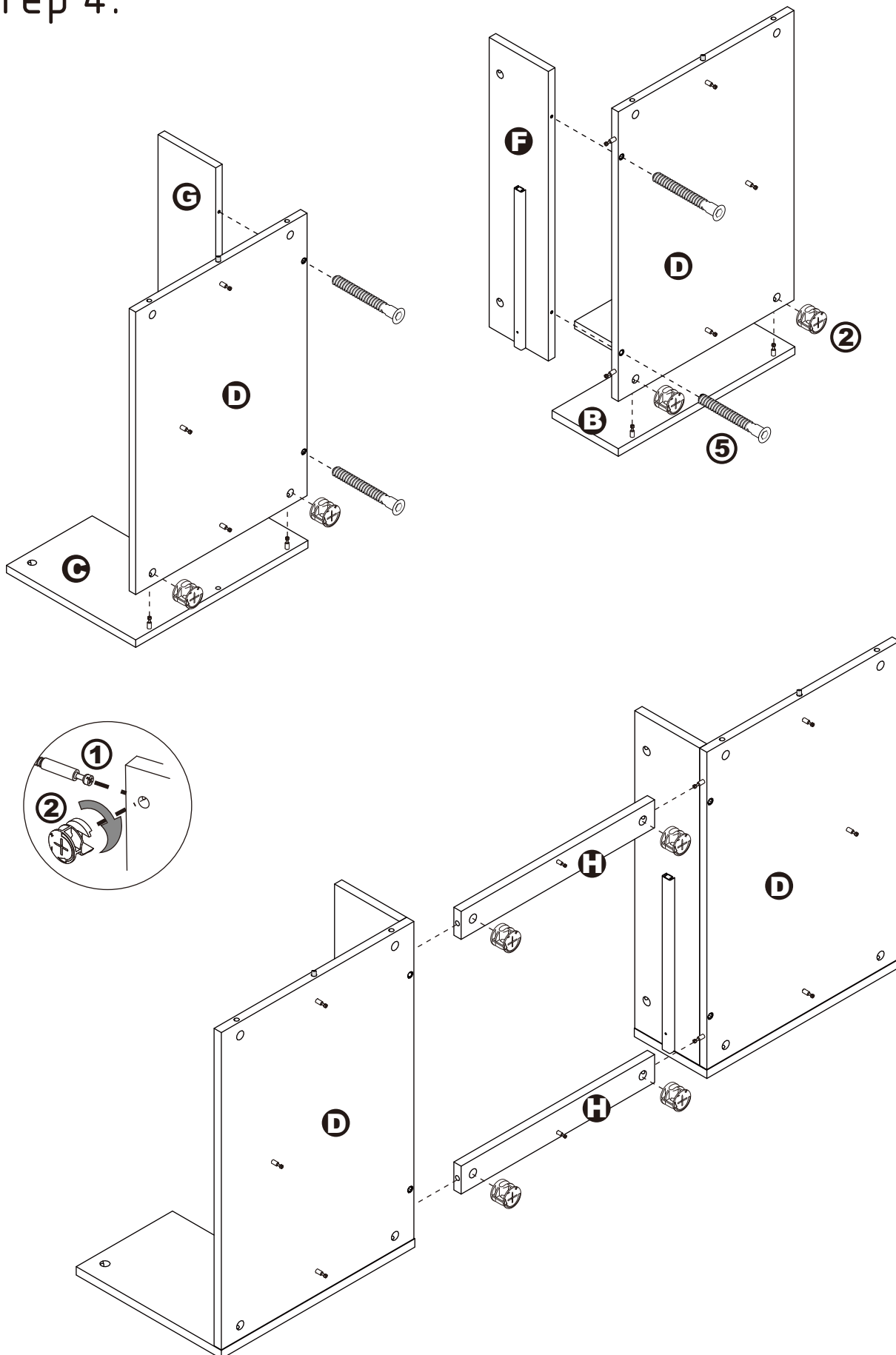
# ASSEMBLY INSTRUCTIONS

## Step 3.



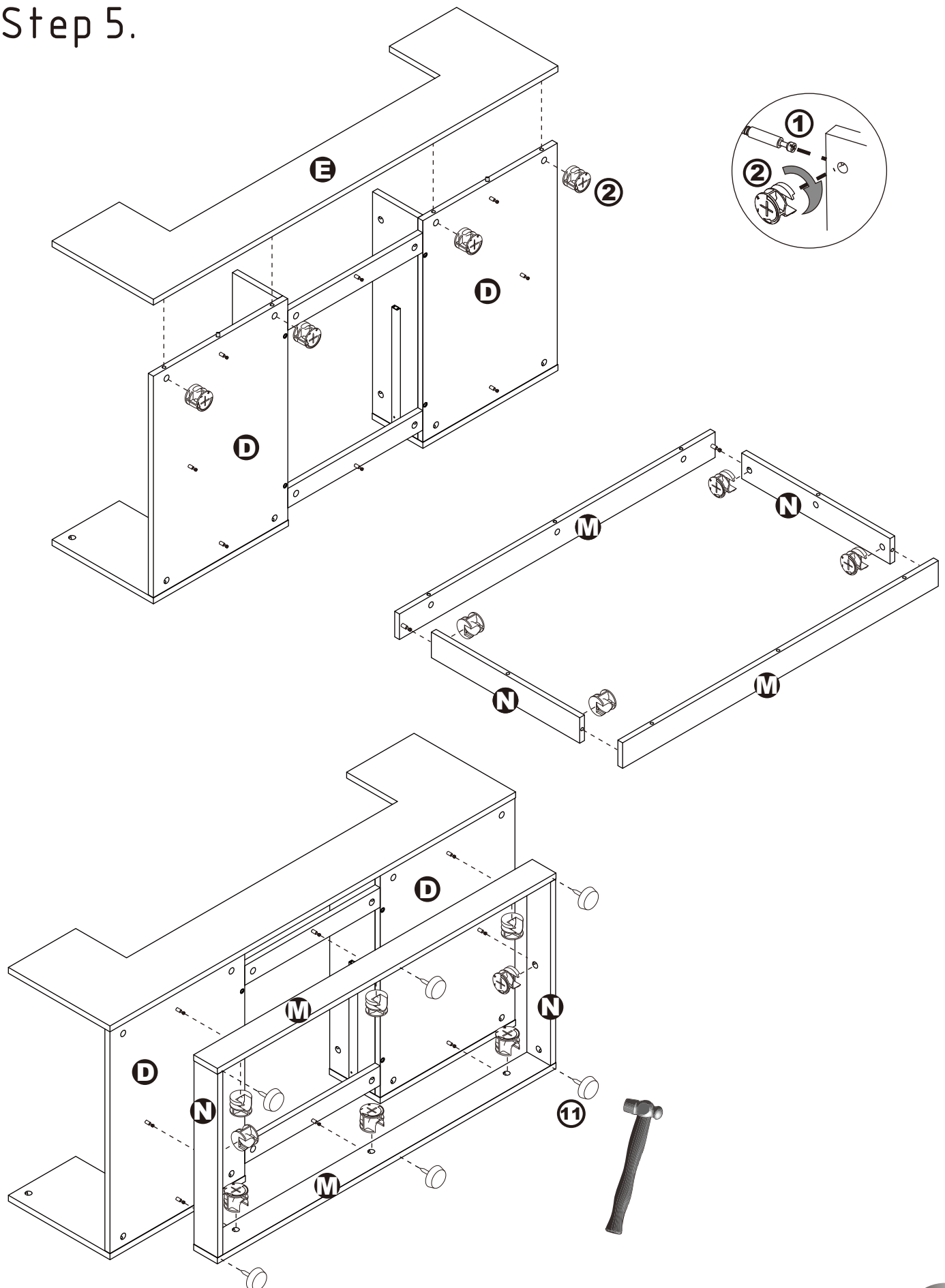
# ASSEMBLY INSTRUCTIONS

## Step 4.



# ASSEMBLY INSTRUCTIONS

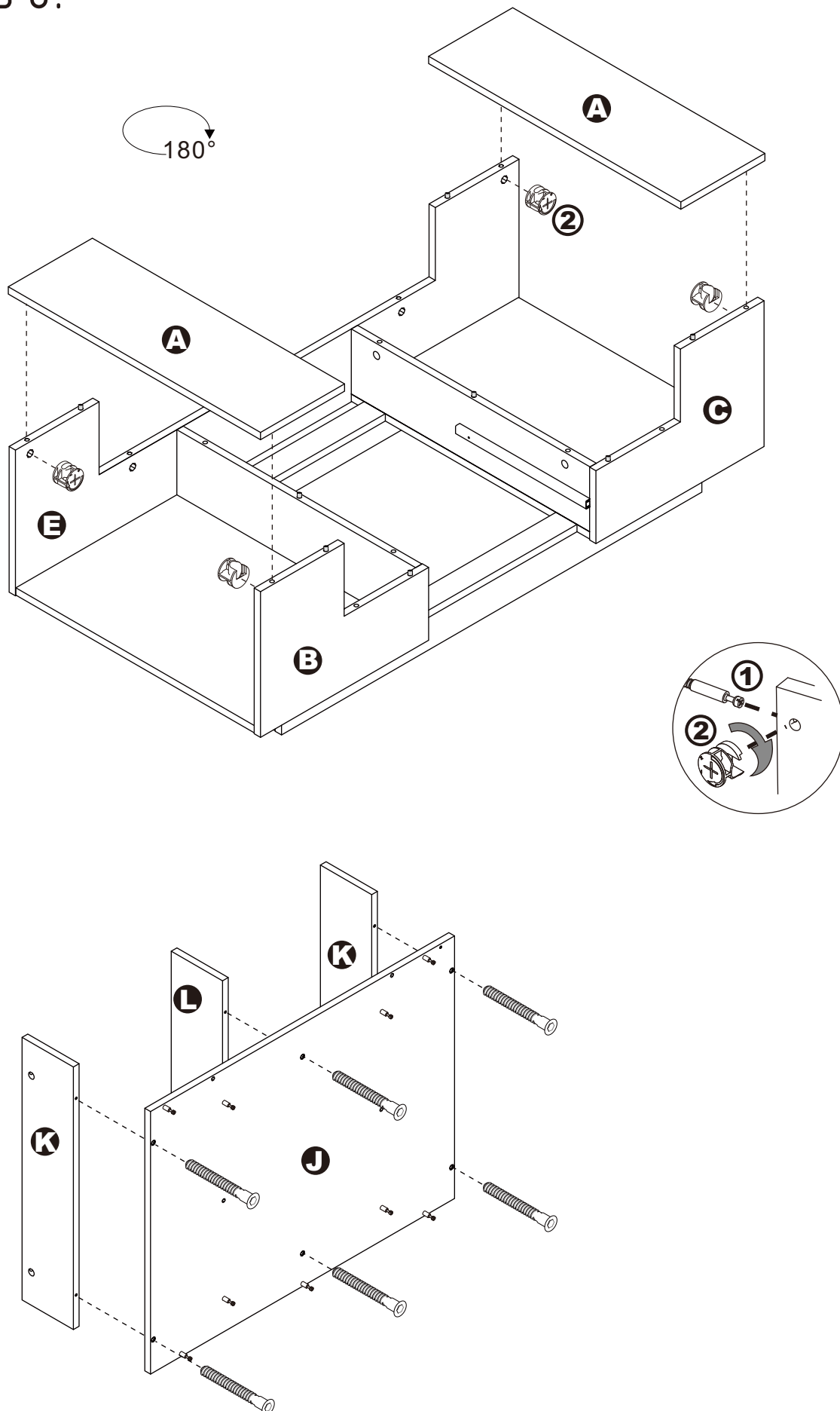
## Step 5.





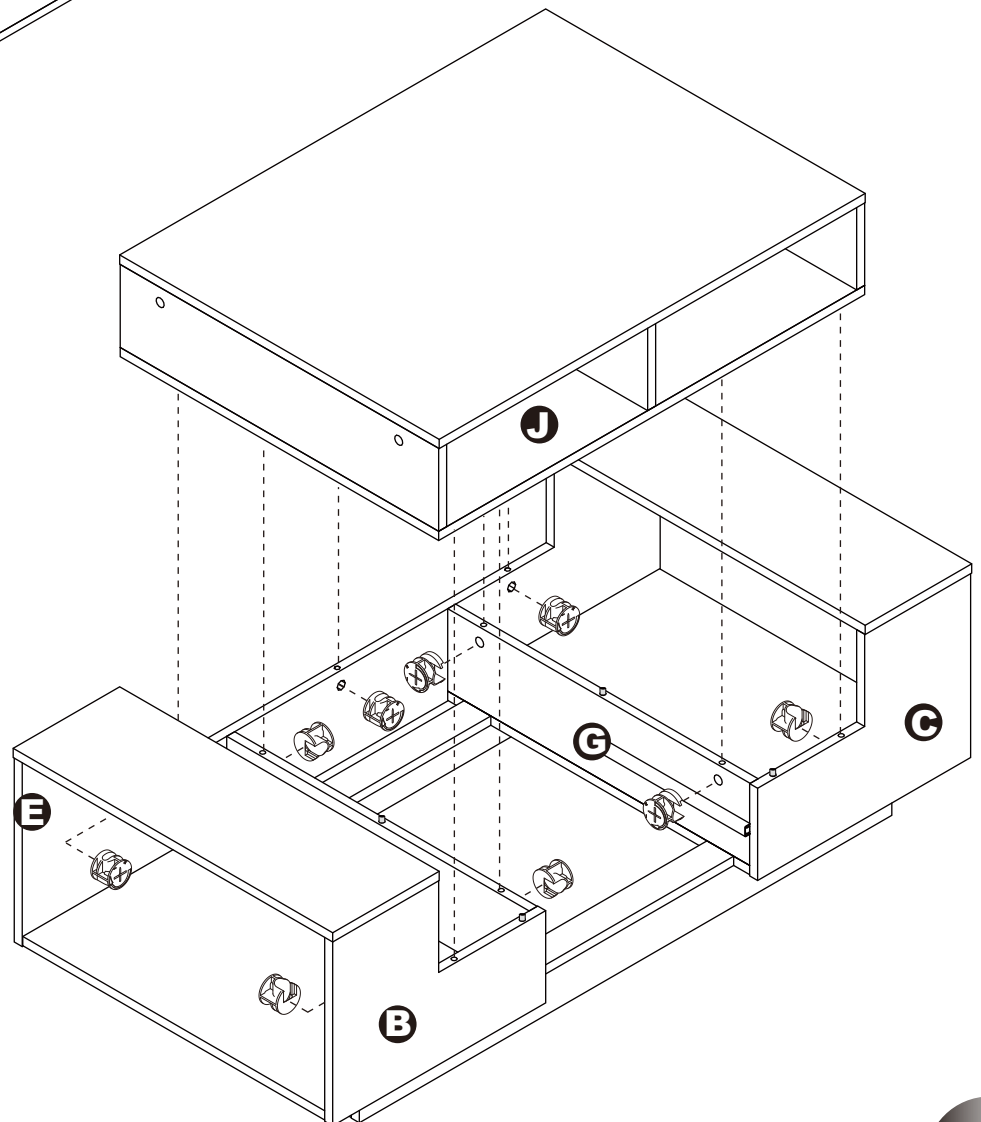
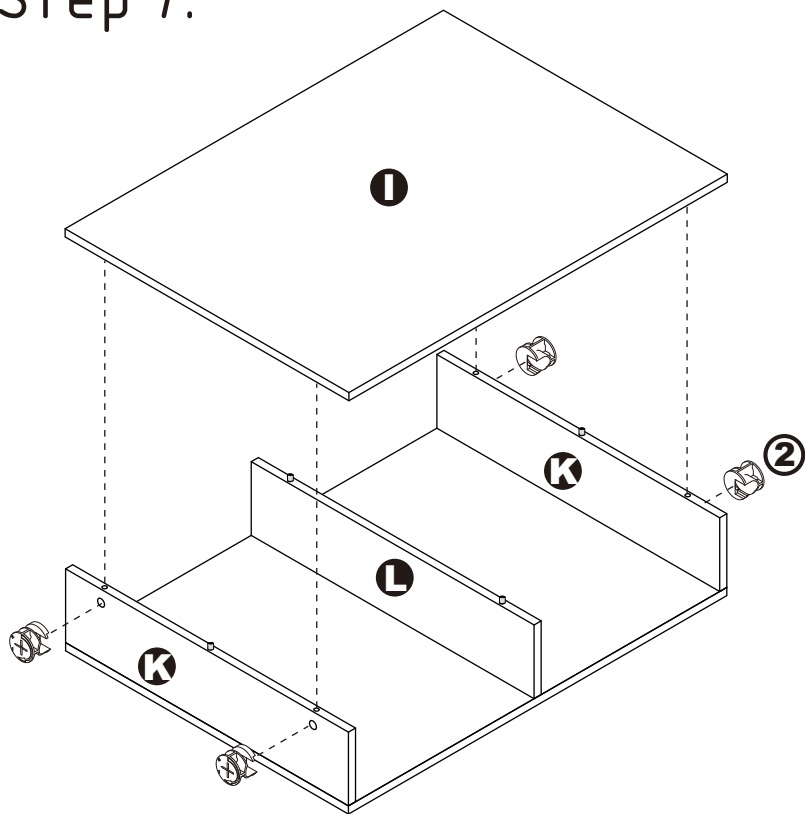
# ASSEMBLY INSTRUCTIONS

## Step 6.



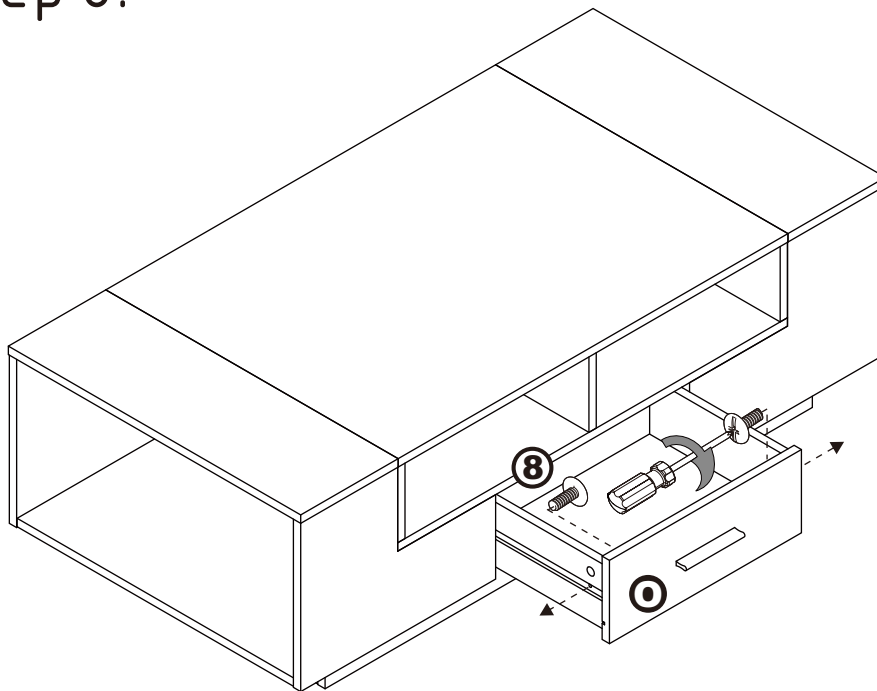
# ASSEMBLY INSTRUCTIONS

## Step 7.



# ASSEMBLY INSTRUCTIONS

## Step 8.



Extend the two outer slides of the runners so that they could align with the sides of the drawer. Make sure the pre-drilled holes from the drawer align with the screw holes of the outer slides. Secure two screws from the inside of the drawer using a Phillips screwdriver to tighten them to the outer slides.

## ASSEMBLY IS COMPLETED

Make sure the product is rested on a flat surface and does not feel loose or wobbly. If it does, double check that the bolts/screws are secured and properly tightened.