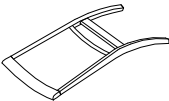
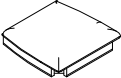
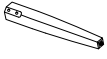
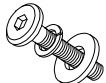
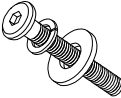



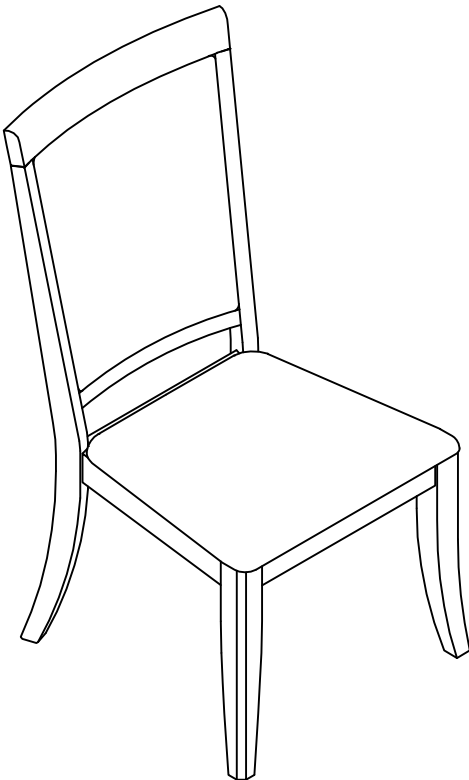
Assembly instructions for
SIDE CHAIR - TWO RING

Caution: Please read instructions thoroughly before unpacking assembly parts. Sharp, exposed staple tips can cause injury, therefore, for your protection, please remove any exposed staples used in packing.

- 1. We recommend that you should assemble this product with the assistance of another person; this will make assembly easier, and will help to eliminate damage to the product or injury to persons during assembly.
- 2. Be sure to check all packing materials carefully for small parts that may have come loose inside the carton during shipment.
- 3. Please do not over tighten screws or bolts.
- 4. Please put all parts on a non-abrasive floor before assembly, and follow the assembly steps to assemble your newly purchased product correctly and efficiently.

Part Lists			
No	Part	Sketch	Q'Ty
A		Chair Back	1 pc
B		Seat Cushion	1 pc
C		Front Leg	2 pcs

No	Hardware List		Q'Ty
1		(Ø1/4" x 20 x 1-1/2") Short Bolt	2 pcs
		(Ø1/4" x 11 mm) Spring Washer	2 pcs
		(Ø1/4" x 19 x 2mm) FLat Washer	2 pcs
2		(Ø5/16" x 18 x 3") Long Bolt	8 pcs
		(Ø5/16" x 13 mm) Spring Washer	8 pcs
		(Ø5/16" x 19 x 2mm) FLat Washer	8 pcs
3		Allen Key	1 pc



Assembly instructions for SIDE CHAIR - TWO RING

Page 2 of 2

Step 1 : Unpack carton and place all parts on a non-abrasive floor.

Step 2 : Remove plastic cover from upholstered seat cushion (B)

Step3 : Attach front legs (C) to the corner blocks of the wood seat frame (B) by using flat washers, spring washers and bolts (#2) thru the pre-drilled holes in the front corner blocks of the wood seat frame. Do not tighten all bolts until the seat is fully assembly

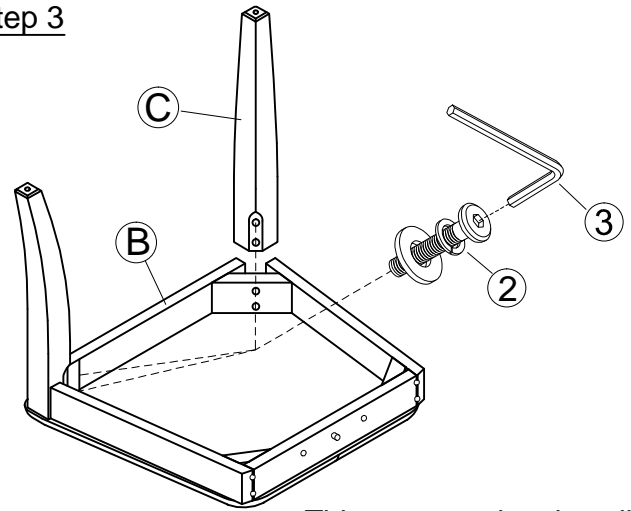
Step 4 : Attach the chair back frame (A) to the Upholstered seat frame (B) by using flat washers, spring washers and bolts (#1),(#2) thru the pre-drilled holes in the rear corner blocks of the wood seat frame and into the chair back frame (A).
Use hand to tighten bolts securely .
(Don't use Allen Key (#3) yet.

Most floors have slight irregularities that can effect chair leveling. If your chair is uneven when placed in its desired location , perform the following steps:

1. Loosen all bolts.
2. Put the chairs at the desired location.
3. Gently push downward on the front of seat and also at the back edge of seat until all four legs rest on floor.
4. Once the chair is level, no wobbly issue, now use Allen key to tighten all bolts securely again.

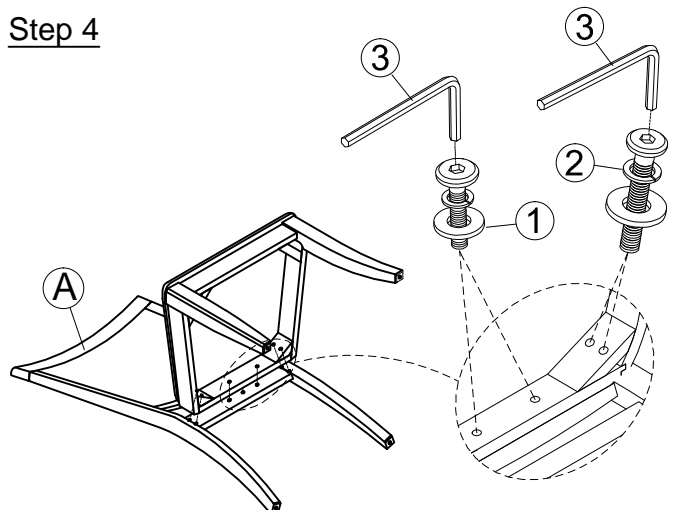
Step 5 : Securely tighten bolts (#1),(#2) by using Allen Key (#3) .

Step 3



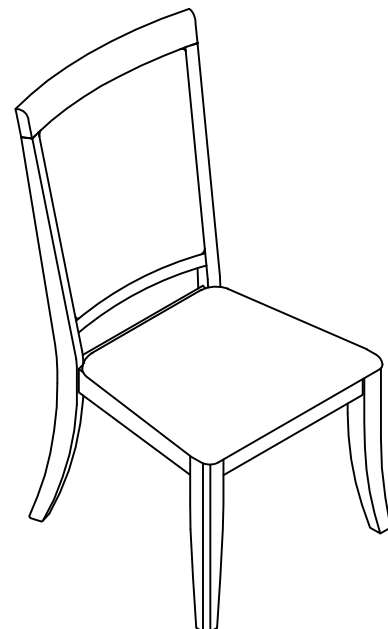
This step requires installation of 4 long bolts.

Step 4



This step requires installation of 4 long bolts and 2 short bolts.

Step 5





WARNING: To avoid serious personal injury:

- Carefully and strictly follow assembly instructions. Improper assembly of furniture can result in structural failure, instability of the product, or tip-over.
- Monitor and carefully control the assembly components. These include small parts and hardware that may present a choking hazard to small children. Bob's furniture should be assembled only by responsible adults and children should not be involved in the assembly process.
- Where provided, wall mounting hardware should always be used as prescribed in these instructions to anchor furniture to walls. Proper use of the wall mounting hardware can significantly reduce the potential for furniture tip-over and crushing injuries.